



Poised for Discovery

**Corporate Presentation
November 2023**

TSX.V: CCCM

C3METALS.COM

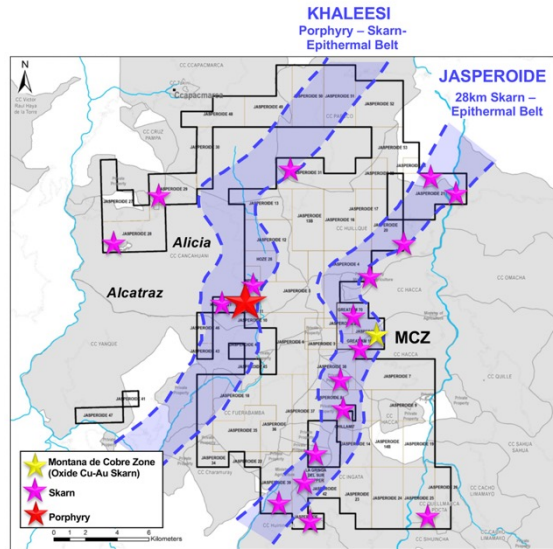
FORWARD-LOOKING STATEMENT

- **Forward-Looking Statement** This presentation contains certain statements that may constitute forward-looking information under applicable securities laws. All statements, other than those of historical fact, which address activities, events, outcomes, results, developments, performance or achievements that C3 Metals anticipates or expects may or will occur in the future (in whole or in part) should be considered forward-looking information. In some cases, forward-looking information is identified by the use of terms and phrases such as “anticipate”, “believe”, “could”, “estimate”, “expect”, “intend”, “may”, “plan”, “predict”, “project”, “will”, “would”, and similar terms and phrases, including references to assumptions. Such information may involve, but is not limited to, comments with respect to strategies, expectations, planned operations or future actions. These forward-looking statements are based on currently available competitive, financial and economic data and operating plans as of the date of this presentation but are subject to known and unknown risks, uncertainties and other factors that may cause actual results, performance or achievements or industry results to be materially different from those expressed or implied by such forward-looking information. Such factors are based on information currently available to C3 Metals, including information obtained from third-party industry analysts and other third-party sources, and are based on management’s current expectations regarding future growth, results of operations, future capital (including the amount, nature and sources of funding thereof) and expenditures. The forward-looking information contained in this presentation is expressly qualified by this cautionary statement
- A number of risks, uncertainties and other factors could cause actual results to differ materially from the results discussed in the forward-looking information, including, but not limited to, the following: risks associated with reliance on key personnel; financial health of C3 Metals' and its related cash flows; general industry and market conditions and growth rates; failure to realize anticipated benefits of acquisitions and monetization opportunities; legislative and regulatory developments; reliance on major customers; general economic conditions and levels of economic activity including interest rate and currency exchange rate fluctuation; current global financial conditions; failure to realize on growth initiatives; financing risks; degree of competition in the industry; risks associated with the development of projects; changes in employee relations; control of costs and expenses including inability to repay maturing debt and to fund capital expenditures and future acquisitions and dependence on information systems and technology; retaining main customers risk.
- Forward-looking information reflects C3 Metals’ current beliefs and is based on information currently available to C3 Metals and on assumptions it believes to be reasonable. In some instances, material factors or assumptions are discussed in this presentation in connection with statements containing forward-looking information. Such material factors and assumptions include, but are not limited to: the Company’s ability to execute on its business plan; the continued success of business development activities; new assets or projects will continue to be added to the Company’s portfolio. The forward-looking information is made as of the date of this presentation and C3 Metals assumes no obligation to update or revise such information to reflect new events or circumstances, except as may be required by applicable law. Because of the risks, uncertainties and assumptions contained herein, prospective investors should not read forward-looking information as guarantees of future performance or results and should not place undue reliance on forward-looking information. Nothing in this presentation is, or should be relied upon as, a promise or representation as to the future.
- There is no warranty or guarantee given by any person as to any forecast or financial outlook contained herein. In addition, such forecasts and financial outlooks reflect various assumptions by C3 Metals. Although C3 Metals believes these assumptions to be reasonable, C3 Metals can give no assurance that such assumptions will prove to be correct and readers are cautioned that such assumptions may prove to be incorrect. The actual results achieved will vary from the forecast or financial outlook results and the variations may be material. There is no guarantee that any forecasts or financial outlooks will be achieved in whole or in part. To the extent any forward-looking statements contain forecasts or financial outlooks, such information is being provided solely to enable a reader to assess C3 Metals’ financial condition and its operational history and experience in the resource exploration industry. Readers are cautioned that this information may be not appropriate for any other purpose, including investment decisions.
- Industry and other statistical data presented in this presentation, except where otherwise noted, have been compiled from sources and participants which, although not independently verified by C3 Metals, are considered by C3 Metals to be reliable sources of information. References in this presentation to research reports or to articles and publications should be not construed as depicting the complete findings of the entire referenced report or article.
- Data for the Jasperoide Project was retrieved from Hochschild Mining’s database and internal reports. Hochschild was operator on the Jasperoide project from 2011 to 2012 and completed 2 drill Programs. C3 Metals had access to the entire drill database and was confident that the reporting of the information was to industry standard practice. The Company has not completed sufficient work to verify all the historic information on the Jasperoide Project.
- The Qualified Person responsible for the technical information in this presentation is Stephen Hughes P. Geo., C3 Metals’ Vice President Exploration, who has approved the technical information included herein. Any reference to historical estimates and resources should not be relied upon. These are not current and a Q.P. has not done sufficient work to classify these historical estimate and C3 Metals Inc. is not treating the historical estimate as a current resource estimate.

A SIMPLE VALUE PROPOSITION AT ~C\$50M MARKET CAP

PERU

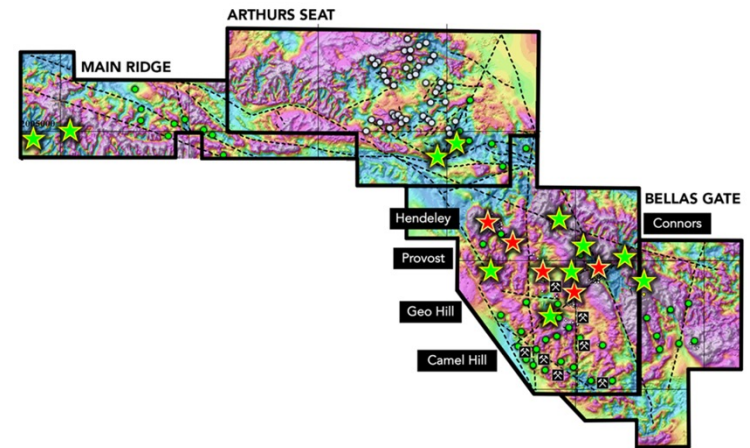
Protected Downside



- **Maiden resource justifies current valuation¹:**
 - **M&I Mineral Resources** - 51.9 Mt at 0.50% Cu and 0.20 g/t Au for 569.1M lbs. of Cu and 326,800 oz. Au.
 - **Measured** - 28.6Mt at 0.60% Cu, 0.24 g/t gold for 380.0M lbs. Cu and 218,200 oz. Au.
 - **Indicated** - 23.3Mt at 0.37% Cu, 0.15 g/t gold for 189.1M lbs. Cu and 108,600 oz. Au.
 - **Inferred** - 4.0Mt at 0.32% Cu, 0.11 g/t gold for 28.3M lbs. Cu and 14,600 oz. Au.

JAMAICA

Near-term Momentum Driver

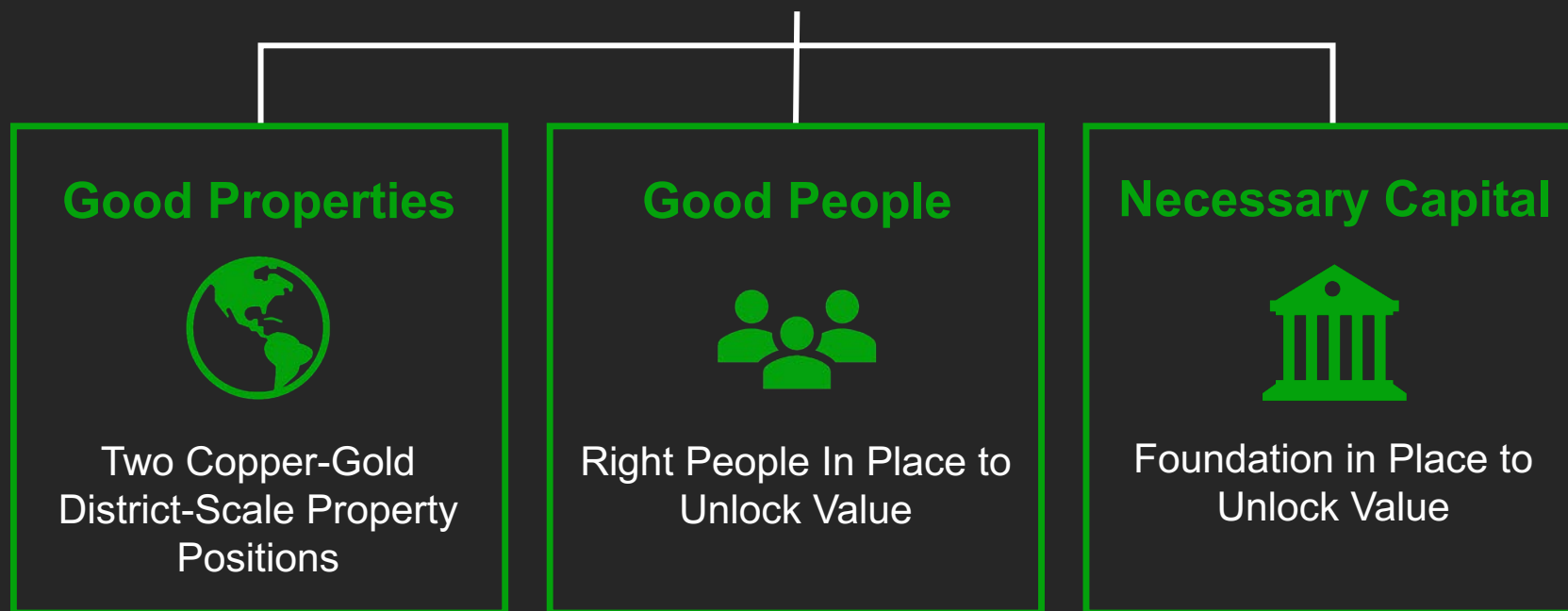


- **Current drill program in Jamaica will provide steady news flow of assay results beginning September 2023**
- **Limited value in stock today for Jamaican portfolio**

¹ "JASPEROIDE COPPER-GOLD PROJECT CUSCO REGION, PERU NI 43-101 TECHNICAL REPORT MINERAL RESOURCE ESTIMATE" (July 5, 2023)

C3 METALS: Investment Opportunity

Good Properties attract **Good People**
and **Good People** attract **Necessary Capital**



Poised for Discovery

C3 METALS' BOARD & SENIOR MANAGEMENT

Serial Resource Industry Value Creators



DAN SYMONS
President & CEO, Director

- +15 years of mining industry experience in business development, corporate development and investor relations
- Argonaut Gold, Romarco Minerals and Renmark Financial



TONY MANINI BSc (Hons), FAusIMM, FSEG
Chairman

- +30 years in exploration, mine development, mine operations, corporate and capital markets
- Rio Tinto, Oxiana, Co-founder EMR Capital



ZIMI MEKE B.Eng (Mech) Hons, FAusIMM, MAICD, FIEAust
Independent Director

- +25 years experience in the design, construction and operation of processing and infrastructure globally
- Founder, MD and CEO of Ausenco



FERNANDO PICKMANN LL.M.
Independent Director

- Lawyer and partner in Dentons' Lima Peru office. Consultant to Peru Government and legal advisor to resource companies
- President, COO and Director of Regulus Resources



YALE SIMPSON BApsc
Independent Director

- +30 years experience
- Co-chairman Extorre Gold Mines Ltd bought by Yamana Gold
- Co-Chairman of Exeter Resources bought by Goldcorp/Barrick



KIMBERLY ANN ARNTSON
Independent Director

- Founder, CEO and Director of LARG. Corporate development and finance specialist
- Prodigy Gold, M&A \$340M bought by Argonaut Gold



STEPHEN HUGHES BSc (Hons), APGNS, PGO (P.Geo)
Vice President Exploration, Director

- +25 years technical and management experience in exploration, development and mine geology
- 12 years Freeport McMoRan Copper & Gold

PROVEN TRACK RECORD OF DISCOVERY & SUCCESS

At all Stages of Exploration and Mining

A Combination of Capital Markets and Technical Expertise

DAN SYMONS

Strategic,
Entrepreneurial
Leader Driving
Growth & Success

- ✓ 15+ years mining executive
- ✓ Stakeholder relations & corporate development leader
- ✓ Key role in highly successful junior-mid tier growth companies
- ✓ **M&A transactions over \$950M**
- ✓ **Equity financings over \$650M**
- ✓ **Debt financings over \$500M**



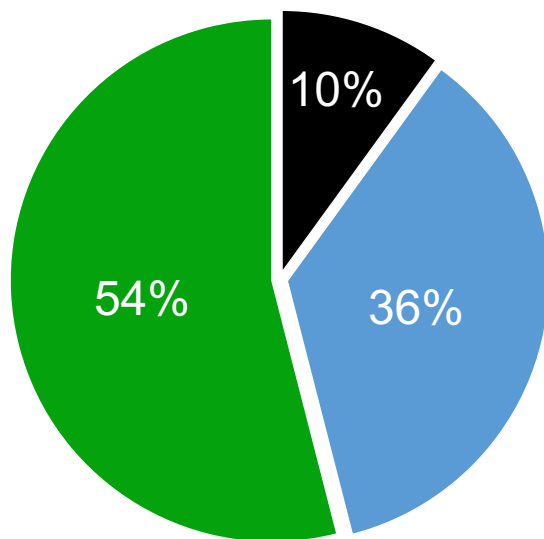
STEVE HUGHES

Visionary, Expert
Porphyry Geologist
Unlocking Value
Through Discovery
and Delineation

- ✓ +25 years exploration, development & technical leadership
- ✓ Extensive experience in: Greenfields, Delineation and Feasibility
- ✓ Mining expertise in: Large Scale Block Cave, Stope & Open Pit
- ✓ **Discovery and/or delineation of over 34B lbs. Copper and 47Mozs Gold (14 projects)**

SHAREHOLDER BREAKDOWN & ANALYST COVERAGE

Over 35% Institutionally Held





■ INSIDERS ■ INSTITUTIONAL ■ HIGH NET WORTH /RETAIL

Institutions

	Ingalls & Snyder Investment Management
	Equinox Partners Investment Management
	Resource Capital Funds
	Aegis Funds
	Pathfinder Asset Management
	J Zechner & Associates

Analyst Coverage

	BEACON	Beacon Securities Michael Curran
	PARADIGM CAPITAL	Paradigm Capital Lauren McConnell

Recent Financing

C\$7.0M private placement at C\$0.07 upsized to C\$8.05M due to strong investor demand – scheduled to close November 15, 2023

Financing Oversubscribed

Strong institutional investor participation

CAPITAL STRUCTURE

CORPORATE INFORMATION

Pre-consolidation² ← 13:1 → Post-consolidation³

Shares Outstanding	804.5M	Shares Outstanding	61.9M
Warrants (avg \$0.19)	6.0M	Warrants (avg \$2.47)	0.5M
Options (avg \$0.09)	38.9M	Options (avg \$1.17)	3.0M
Share Price	C\$0.07	Share Price	C\$0.91
Market Cap (Undiluted)	C\$56.3M	Market Cap (Undiluted)	C\$56.3M

¹ Post closing of November 1 & 6, 2023 private placement

² At November 13, 2023

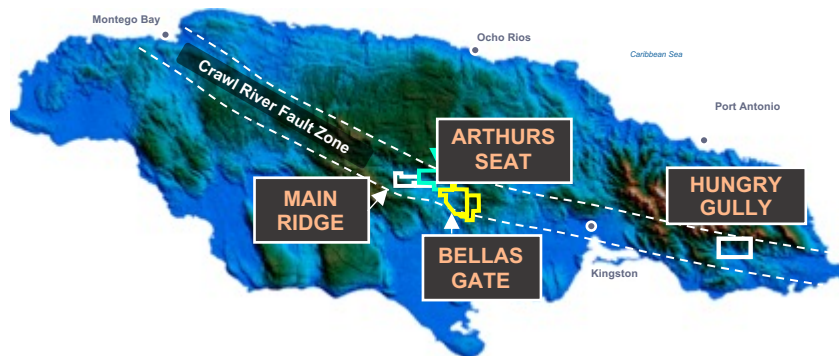
³ Post consolidation announced November 1, 2023 assuming November 13, 2023 share price and post closing of November 1 & 6, 2023 private placement

C3 Metals

Focused on creating substantive value through the discovery and development of **LARGE COPPER-GOLD DEPOSITS**

JAMAICA

Where we believe we will show the world a new district



20,700 hectares
in Crawl River Fault district

PERU

Known world class Copper/Gold district



30,000 hectares
in Andahuaylas-Yauri district

JAMAICA: Government Supportive & Favorable Environment



Mining **2nd**
Largest Industry
in Jamaica



70+ year

Bauxite industry

- US\$500-600M annual exports
- Alumina refinery in country



75+ years

Mining law in
place
(since 1947)



150+

Open-pit
limestone /
aggregate mines

Jamaican Mining History

- Historical Mining – 1600s and 1800s, Spanish and British
- Modern day gold mine (Pennants) closed as recently as 2004
- Supportive government
- Streamlined permitting
 - Two-three months to obtain five year drill permits

JAMAICAN GOVERNMENT IS SEEKING INVESTMENT IN METALLIC MINERALS

MINES AND GEOLOGY DIVISION OF THE MINISTRY OF AGRICULTURE, FISHERIES AND MINES

Economic Geology

The Economic Geology Unit is responsible for the identification and evaluation of Jamaica's mineral resources as well as making recommendation for their economic exploitation.

The activities of this unit includes:

Metallic Minerals

The sub-units activities include:

- The identification and evaluation of the precious and base metal potential (gold(Au), silver(Ag), copper(Cu), nickel(Ni), lead (Pb)) of the island.
- To generate a comprehensive metallic mineral database of the island with emphasis on its application to mining and environmental management, epidemiology and agriculture.
- To promote and encourage investment in non-bauxite metallic minerals as a means of diversifying the minerals sector.

Industrial Minerals

The sub-units activities include:

- Identifying and evaluating economic deposits of industrial minerals.
- Determining the commercial viability of different types of limestone, marbles, semi-precious stones as well as other industrial minerals.
- Making recommendation for the profitable exploitation and marketing of these minerals.
- Identification, evaluation and development of sources of skid resistant aggregate resources
- Providing assistance with the demarcation of quarry zones, via geological investigative sampling and reports.
- Assist Government and private organizations as well as members of the public with general geological information, industrial mineral information and education.

Assisting investors with:

- Preliminary geological evaluation of mineral deposits.
- Geological evaluation, sampling, analyses, definition of mineral resources and quarry development plans.
- Recommend appropriate environmental practices in the extraction of industrial minerals.

Corporate Office
138H Maxfield Avenue, Kingston 10, Jamaica, WI
(876) 754-1900-1 / (876) 754-2390-3

Mines and Geology Division
P.O. Box 141, Hope Complex, Hope Gardens,
Kingston 6, Jamaica, WI

“The identification and evaluation of the precious and base metal potential gold, copper on the island.”

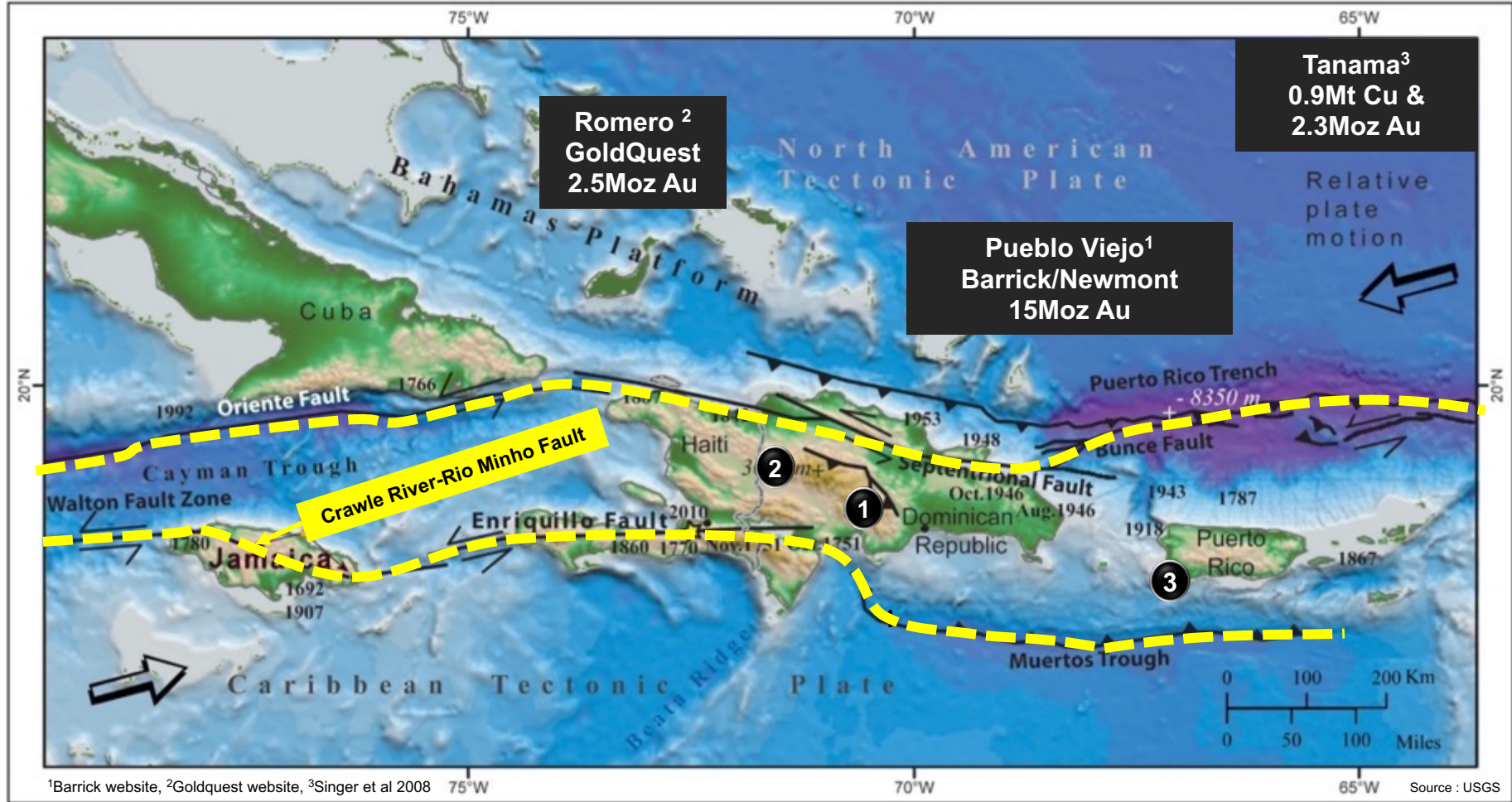
“To promote and encourage investment in non-bauxite metallic minerals as a means of diversifying the minerals sector.”

Source: <https://mgd.gov.jm/economic-geology> MINES & GEOLOGY Division

JAMAICA: A Hidden Gem

NEW & EMERGING PORPHYRY & EPITHERMAL DISTRICT

Crawle River-Rio Minho Fault Porphyry & Epithermal District Highly Underexplored



This is the C3 Metals opportunity!

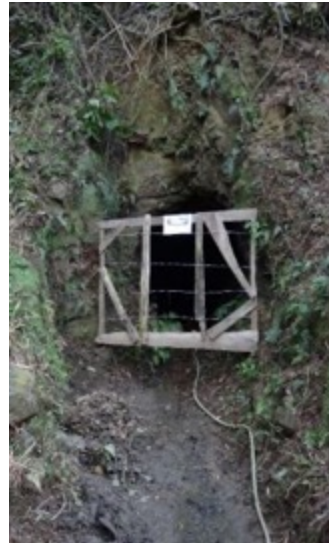


STAMFORD HILL AND CHARING CROSS MINED IN 1800s

62 Adits & Multiple Shafts Sunk



Adit to the 2nd Level at Stamford Mine



Closed adit



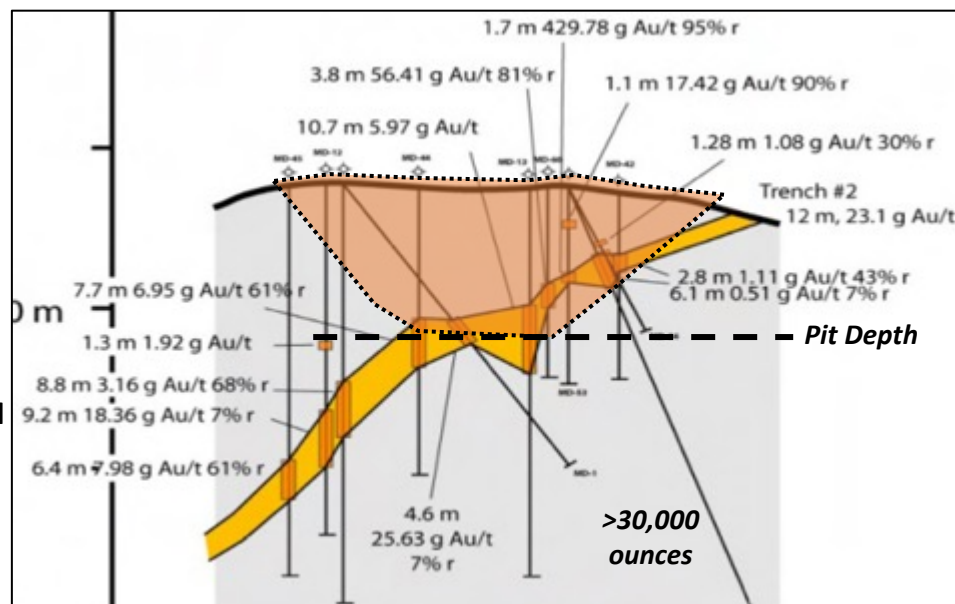
Old mine workings at the Stamford Mine, Bellas Gate SEPL

- **British mined high-grade epithermal copper-gold veins in the 1800s**
- Stamford Hill and Charing Cross veins mined during the 1850s.
- Operated until 1863
- Reports indicate between 1854-1857, 188 tonnes of copper was shipped to England grading 14.3% Cu.
- **Adits between 0.5km to 3.0km from 12 porphyry targets**

PENNANTS GOLD MINE (2002 – 2004)

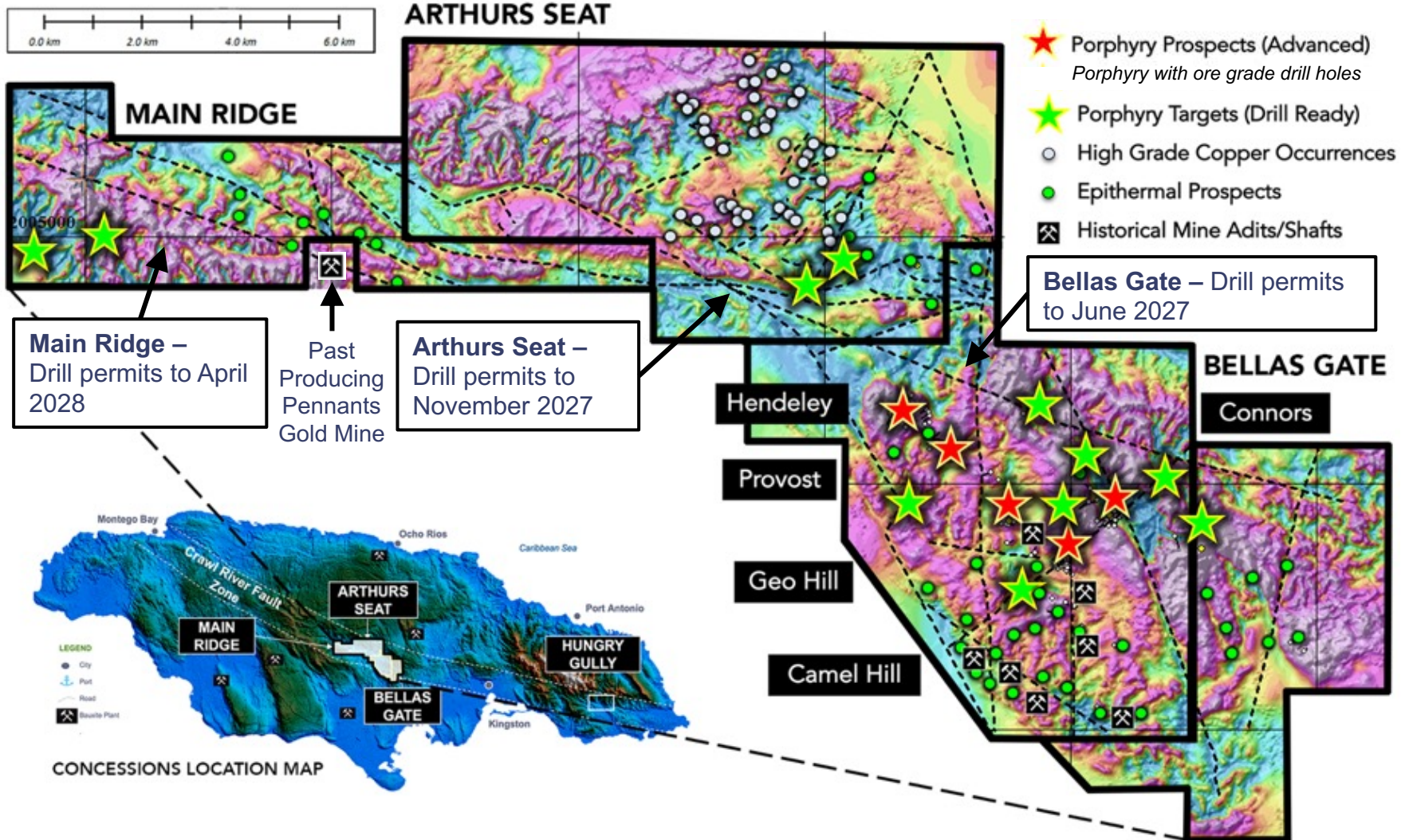
First Gold Deposit in Jamaica to be put into Production

- **BHP (1992)** defined a 3km gold in soil anomaly, discovered Pennants epithermal veins system
- **Orvana (1995-1998)** reported bonanza gold grades in Pennants drill holes, including
 - 1.7m @ 429.78g/t gold in MD53
 - 3.8m @ 56.41g/t gold in MD60
 - 4.6m @ 25.63g/t gold in MD1
 - 9.2m @ 18.36g/t gold in MD12
- Historic resource reported at **72,753t @ 21.32g/t gold**, partnered with AusJAM
- **AusJAM** constructed Pennants in 2002, mine development costs reported at USD 7.5M
- **Pennants Mine closed after 2-years**, due to low gold price and numerous operations issues, reported to have extracted 16,000oz
- **USD 7 million** paid to the Jamaican government in royalties (or 4.25%)



C3 METALS IN JAMAICA: A New & Emerging District

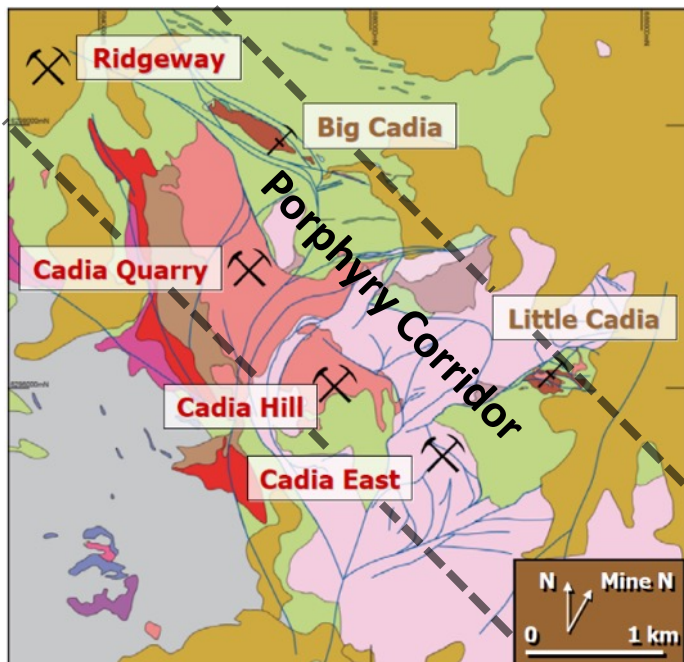
16 Porphyry & 40 Epithermal Targets Identified Over 30km Strike



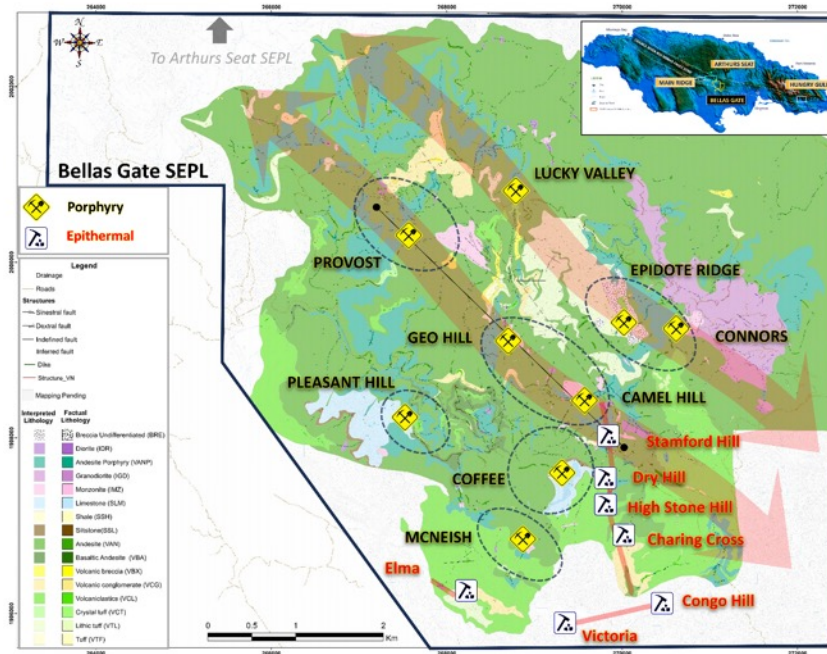
CADIA AND BELLAS GATE COMPARABLE

Thick Volcanic Package Intruded by Multiple Porphyry Intrusive Complexes

Cadia



Bellas Gate



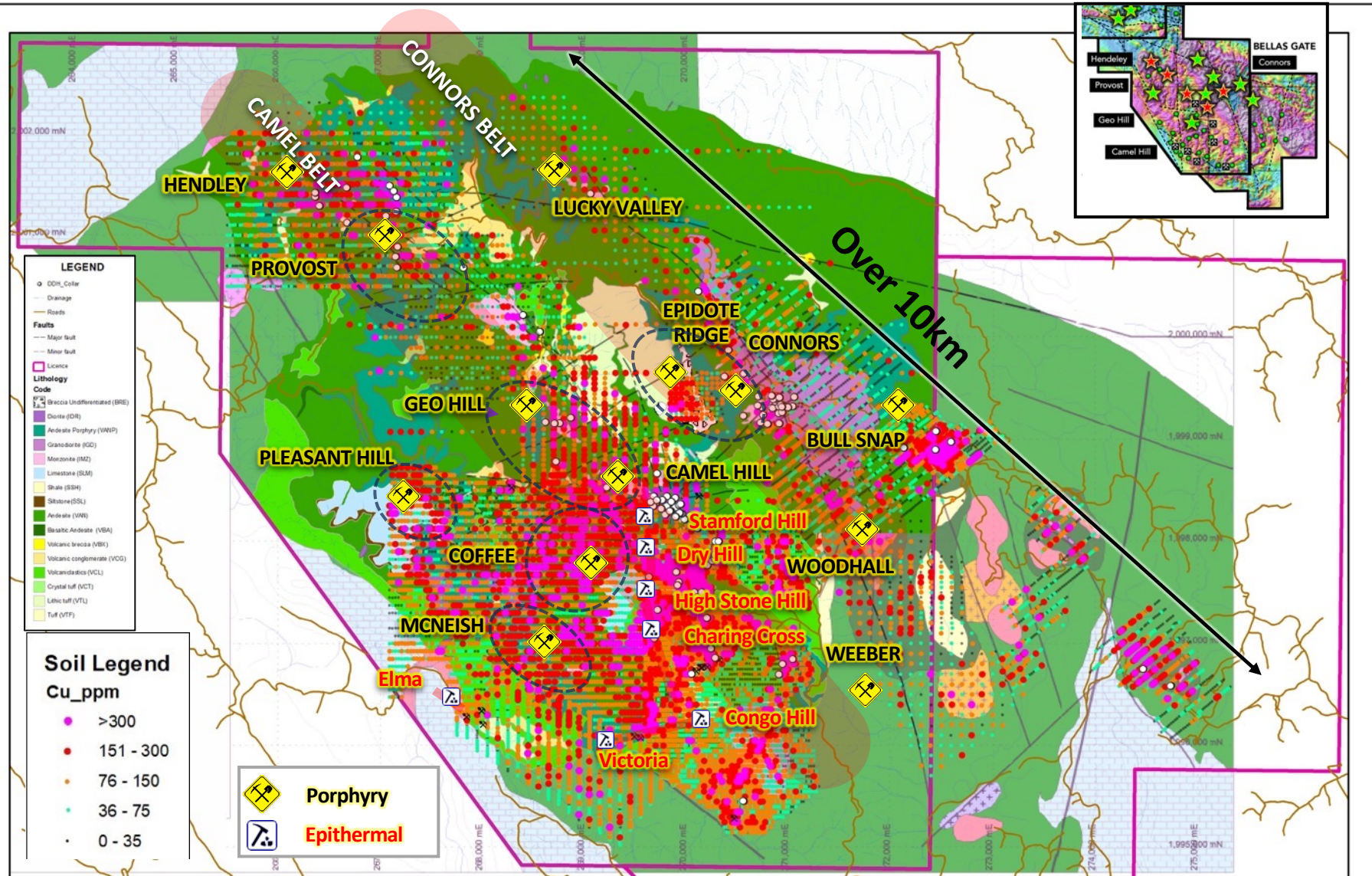
Multiple Porphyry Centres Over Intrusive Complexes

- New South Wales, Australia
- Owned by Newcrest – largest gold producer in Australia
- Significant discoveries made in early 1990s led to mine development
- Combination open pit / underground operation
- 30+ year mine life producing 560-620koz of gold and 95 – 115kt copper (2023 guidance)¹
- 2022: 561koz gold and 85kt of copper produced at AISC of (\$124/oz) for FCF of \$613M¹

¹ Source: Newcrest 2022 Annual Report

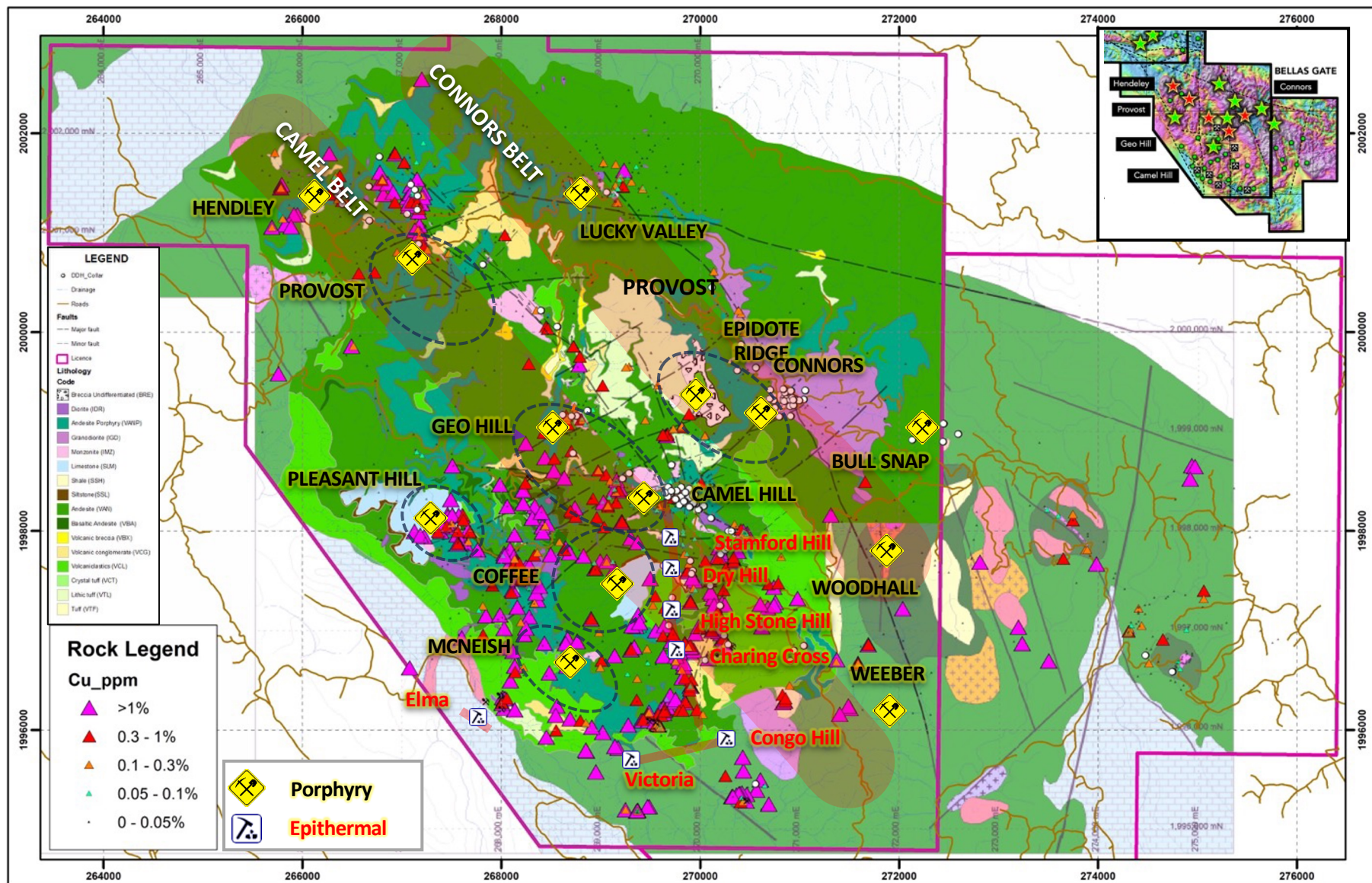
BELLAS GATE MULTI-KILOMETRE SCALE COPPER IN SOIL ANOMALY

Multi-Element Geochemistry (Cu-Au-Se-Mo) Confirms Multiple Porphyry



EXTENSIVE REMAPPING AND SAMPLING PROGRAM

Large Quantity of Rock Chip Samples Assayed Over 1% Copper

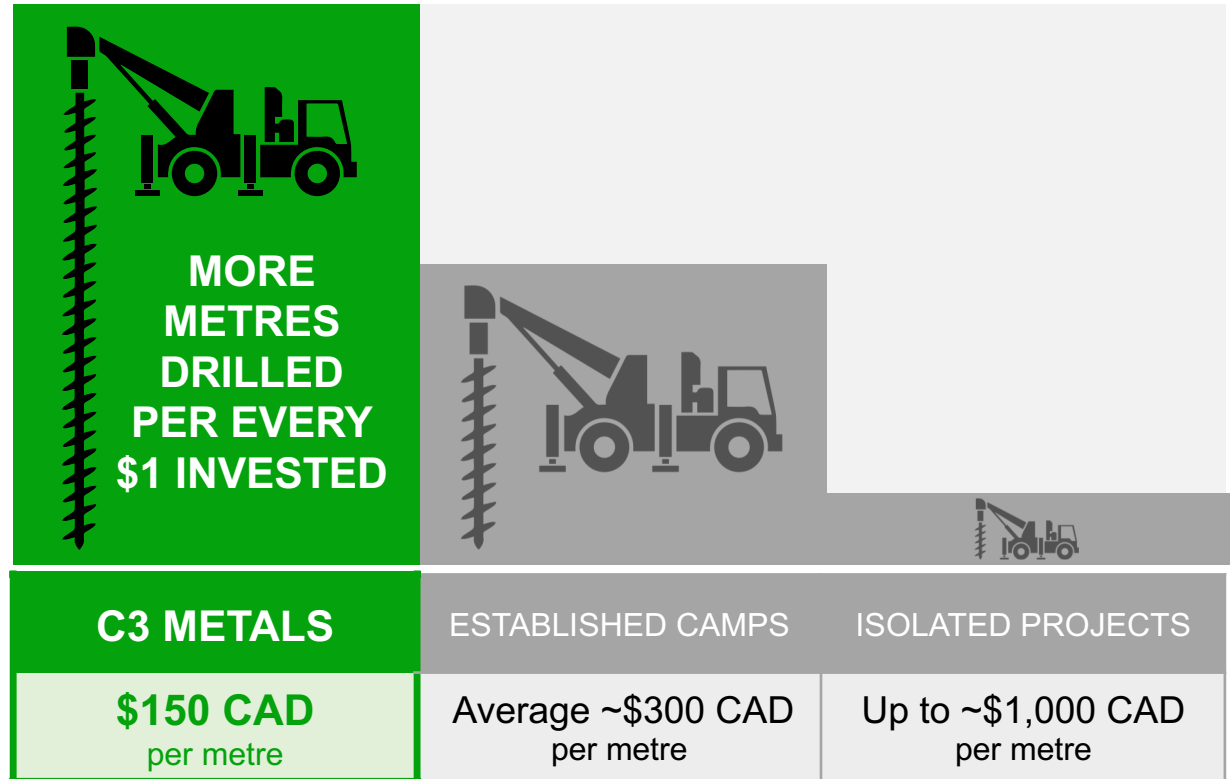


STRETCHING OUR EXPLORATION DOLLARS THROUGH SMART INVESTMENTS

Smart Investment:



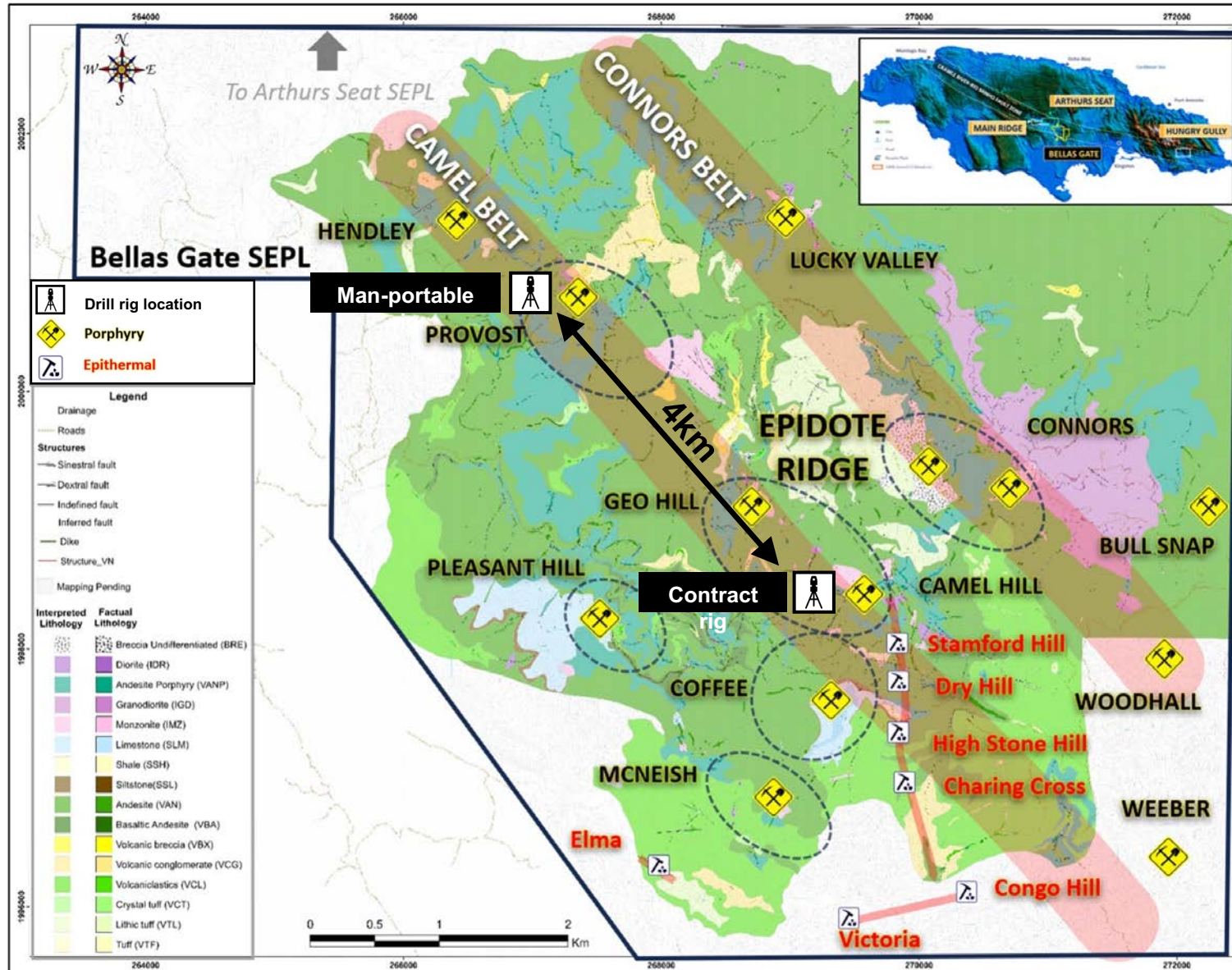
C3 Metal's All-In Drilling Cost Advantage To Date:



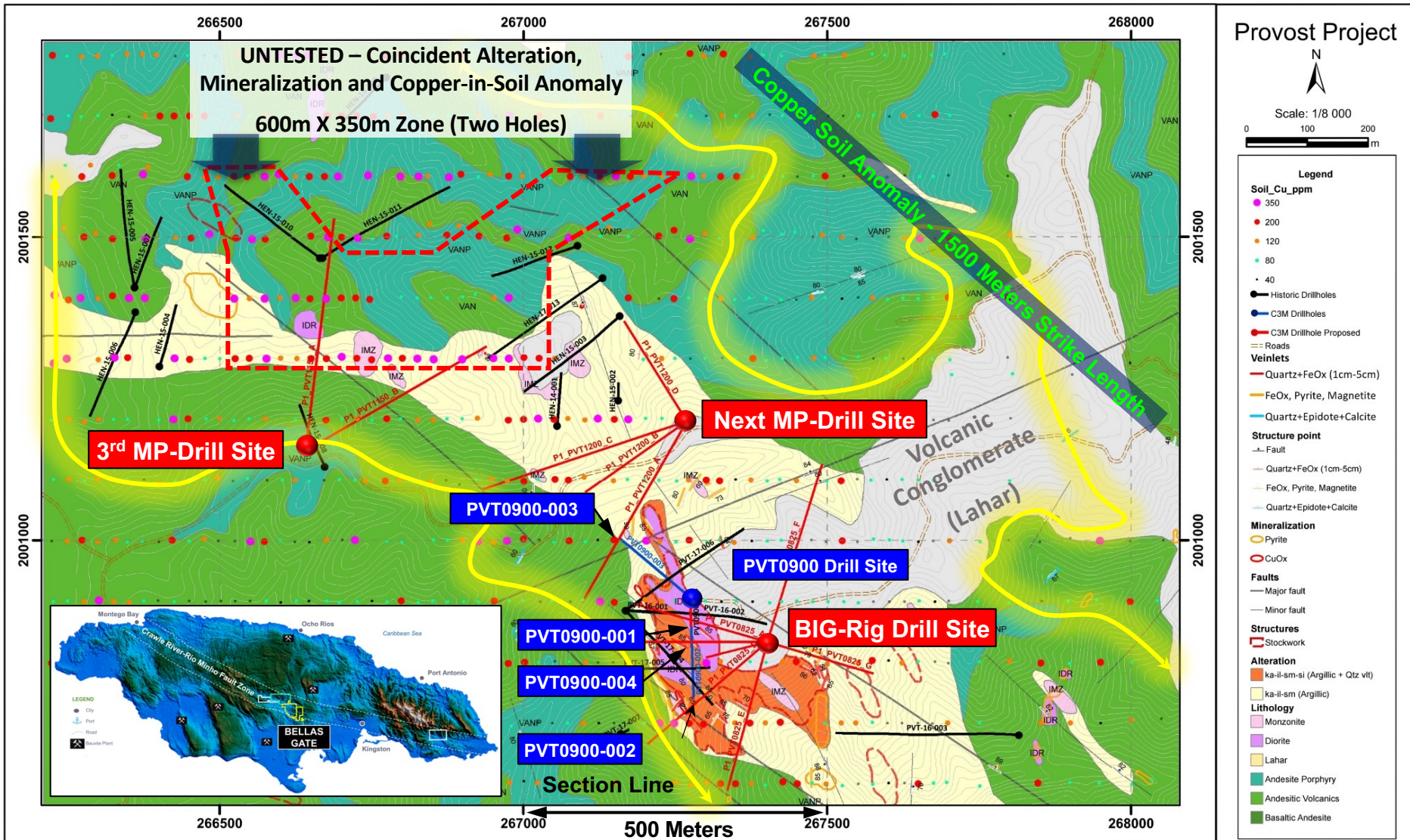
C3 Metals' owned rig costs are 15 – 50% of the all-in drilling cost of average contract drilling

C3 Metals Stretches its Investor's Dollars!

ACTIVELY DRILLING WITH TWO RIGS



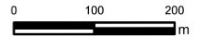
PROVOST PLAN VIEW MAP



Provost Project

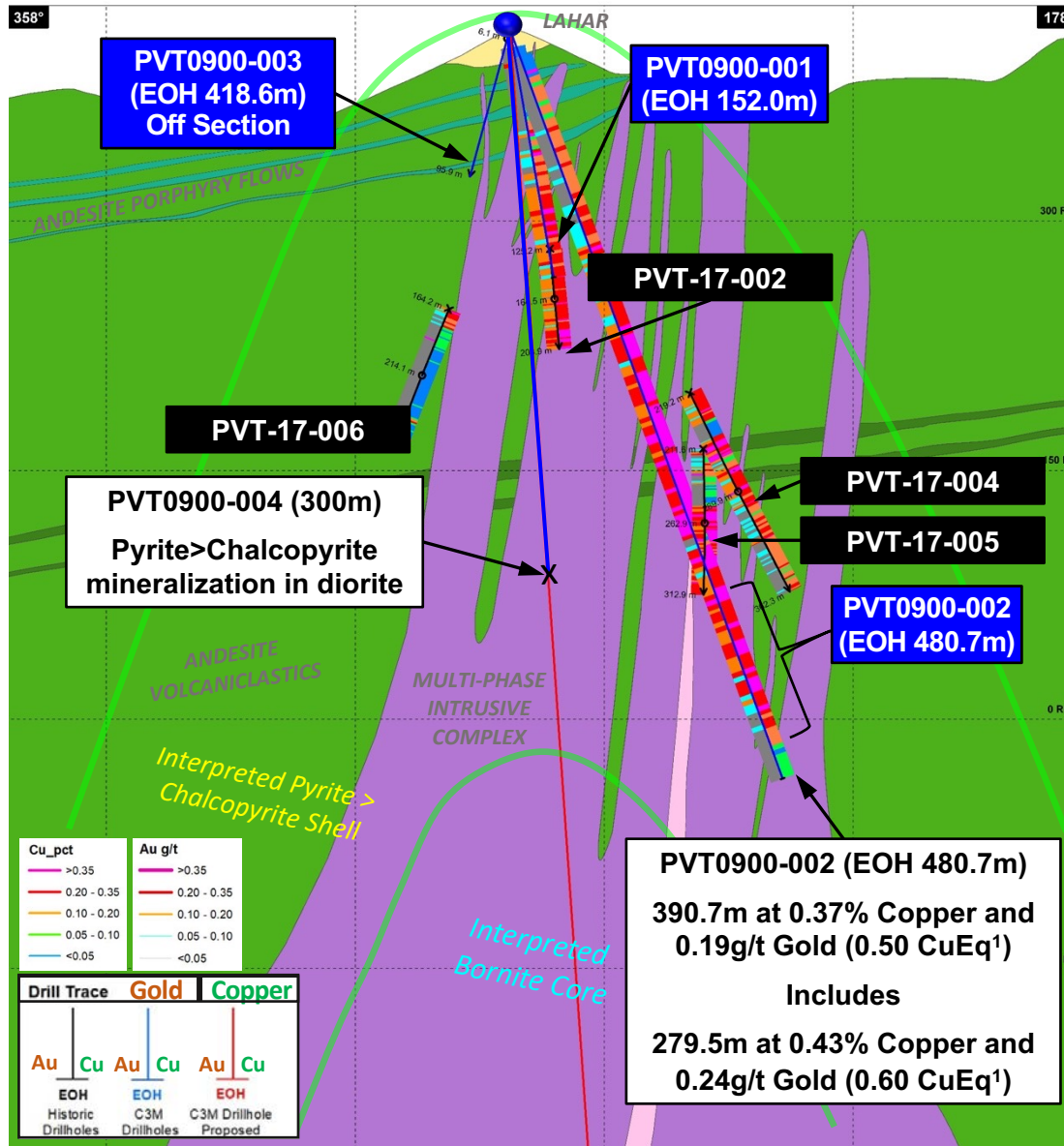


Scale: 1/8 000



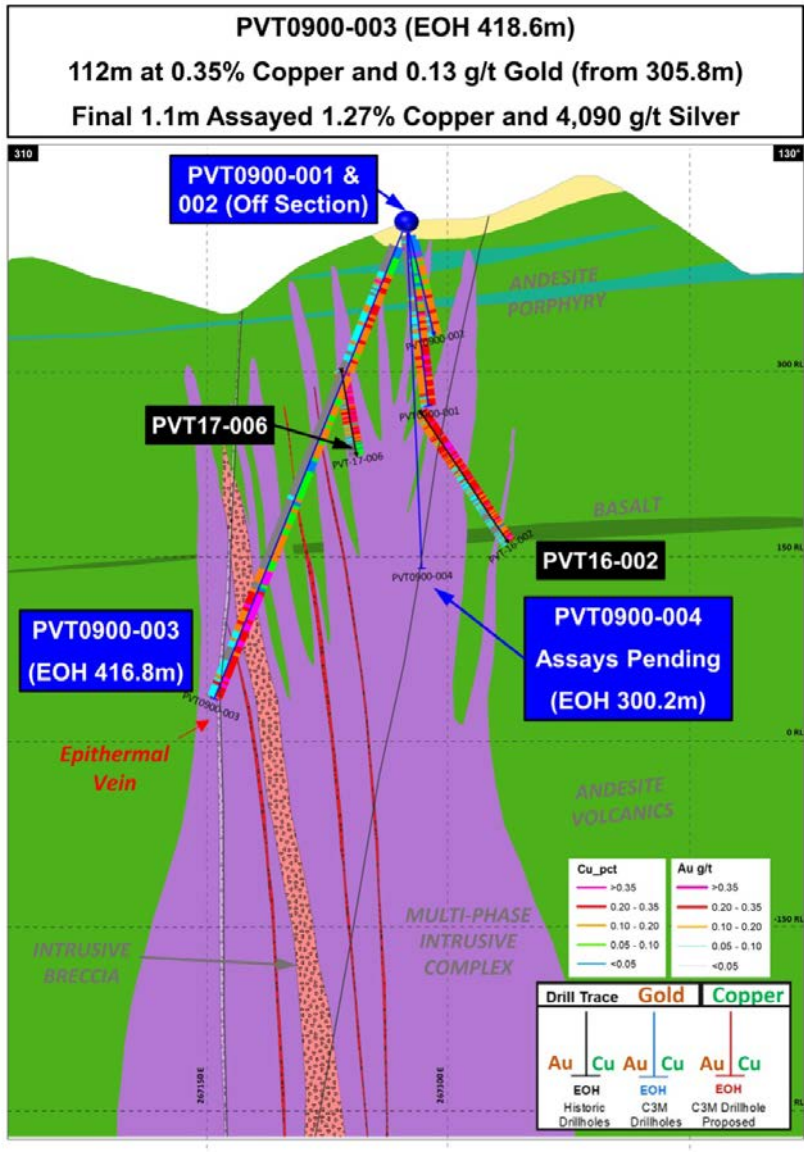
Legend	
Soil_Cu_ppm	
● 350	
● 200	
● 120	
● 80	
● 40	
● Historic Drillholes	
● C3M Drillholes	
● C3M Drillhole Proposed	
— Roads	
Veinlets	
— Quartz+FeOx (1cm-5cm)	
— FeOx, Pyrite, Magnetite	
— Quartz+Epидote+Calcite	
Structure point	
— Fault	
— Quartz+FeOx (1cm-5cm)	
— FeOx, Pyrite, Magnetite	
— Quartz+Epидote+Calcite	
Mineralization	
● Pyrite	
● CuOx	
Faults	
— Major fault	
— Minor fault	
Structures	
■ Stockwork	
Alteration	
■ ka-il-sm-si (Argillic + Qtz vit)	
■ ka-il-sm (Argillic)	
Lithology	
■ Monzonite	
■ Diorite	
■ Andesite Porphyry	
■ Andesitic Volcanics	
■ Basaltic Andesite	

PROVOST CROSS SECTION – PVT0900-002



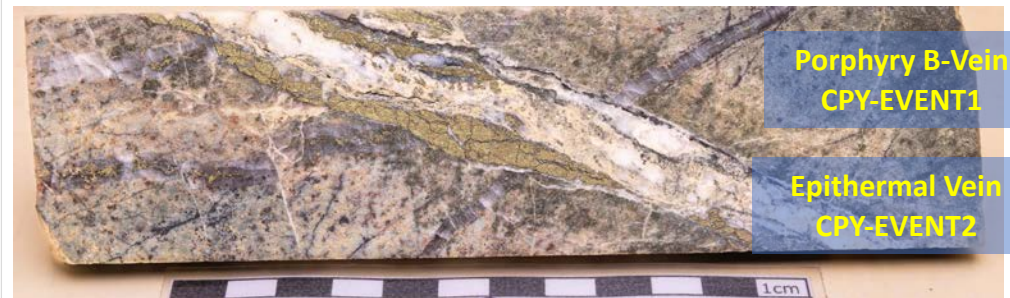
¹ Copper equivalent (CuEq) calculation is for reporting purposes only and was determined based on $CuEq (\%) = Cu (\%) + ((0.7079 \times Au \text{ g/t}) \text{ under metal price assumptions of Copper - US\$3.00/lb, Gold - US\$1,800/oz. As the Bellas Gate project is an early-stage exploration project and there is insufficient metallurgical data to allow for estimation of recoveries, porphyry copper-gold recoveries are estimated based on multiple comparable porphyry-style copper-gold deposits (Alumbrera, Batu Hijau, Fish Lake, Mt Milligan, El Pachon, Agua Rica, Cerro Cassile and Skouries) which averaged 90% recovery for copper and 73% for gold. A nominal cut-off of 0.2% CuEq is used for the reporting of potentially significant intercepts and higher-grade cut-offs are 0.4% CuEq. Maximum contiguous dilution within each intercept is 10m for 0.2% and 0.4% CuEq. Samples have been composited to two and maximum three metre lengths.$

PROVOST CROSS SECTION – PVT0900-003



What We Have Learned At Provost

- ✓ Both andesite (green) and diorite (purple) units are mineralized
- ✓ Higher grades in diorite (purple)
- ✓ Epithermal veins overprint the porphyry mineralization
- ✓ Epithermal veins significantly increase the copper and precious metals grade (gold and/or silver) within the porphyry
- ✓ Multi-pulse system confirmed



PVT0900-002 - 3.0m sample assayed 0.86% copper and 0.53 g/t gold (1.24% CuEq¹)

¹ Copper equivalent (CuEq) calculation is for reporting purposes only and was determined based on CuEq (%) = Cu (%) + ((0.7079 × Au g/t) under metal price assumptions of Copper - US\$3.00/lb, Gold - US\$1,800/oz. As the Bellas Gate project is an early-stage exploration project and there is insufficient metallurgical data to allow for estimation of recoveries, porphyry copper-gold recoveries are estimated based on multiple comparable porphyry-style copper-gold deposits (Alumbraera, Batu Hijau, Fish Lake, Mt Milligan, El Pachon, Agua Rica, Cerro Cassle and Skouries) which averaged 90% recovery for copper and 73% for gold. A nominal cut-off of 0.2% CuEq is used for the reporting of potentially significant intercepts and higher-grade cut-offs are 0.4% CuEq. Maximum contiguous dilution within each intercept is 10m for 0.2% and 0.4% CuEq. Samples have been composited to two and maximum three metre lengths.

CASE STUDY: NEWMONT ACQUISITION OF GT GOLD in 2021

Newmont acquired GT Gold for similar copper grades

Purchase Price	\$311M USD (\$418M CAD)
Indicated	298.0 Mt at 0.28% Cu and 0.36 g/t Au (0.53% CuEq ²)
Inferred	542.8 Mt at 0.25% Cu and 0.31 g/t Au (0.47% CuEq ²)

C3 Metals' CuEq² grades in recent drilling are in line with the average grade of current operating mines

Operating mines currently have an **average grade of 0.53%** while copper projects **under development** have an **average grade of 0.39%**.¹

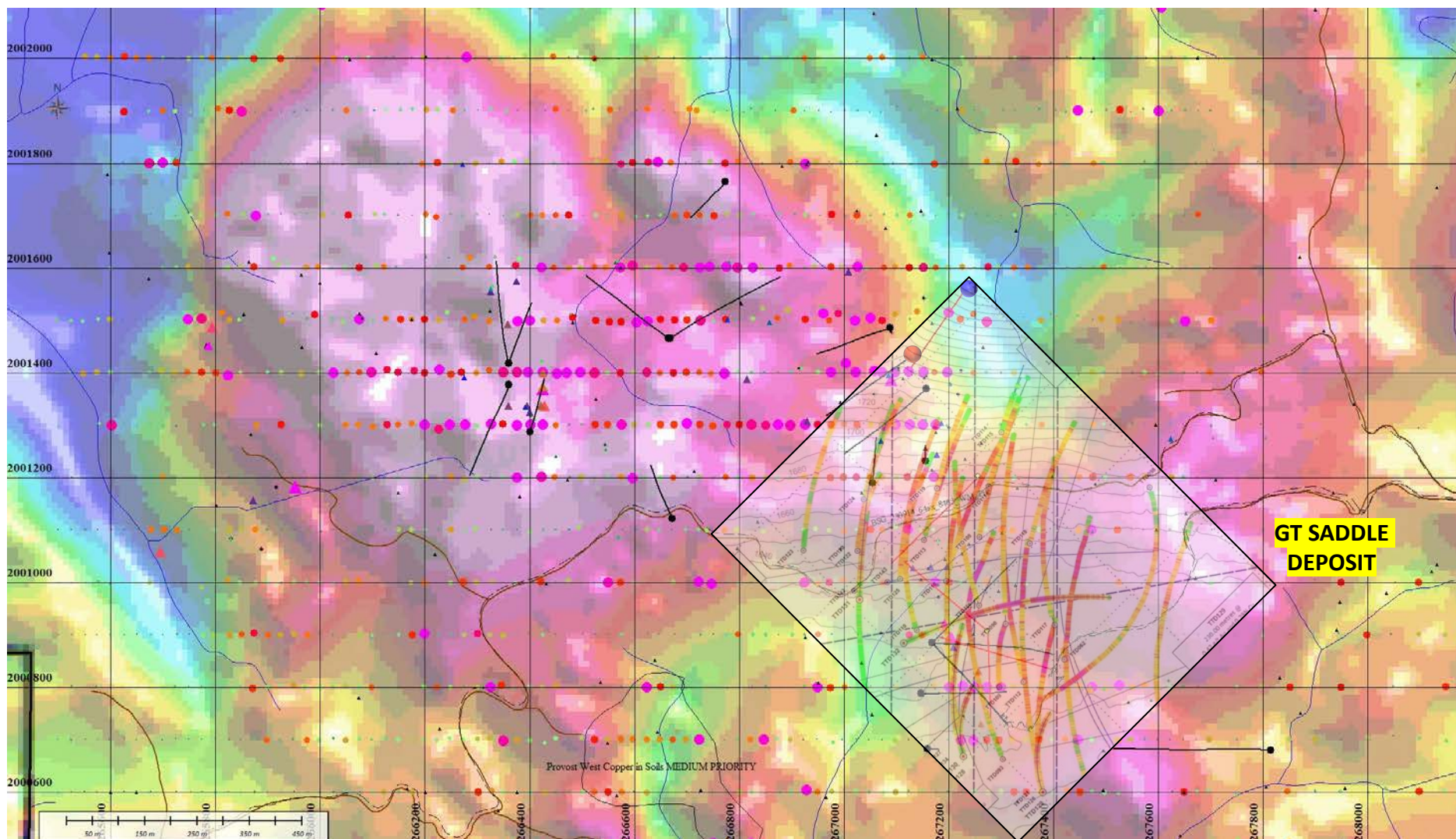
¹ Source: MINING.com

² Copper equivalent (CuEq) calculation is for reporting purposes only and was determined based on $CuEq (\%) = Cu (\%) + ((0.7079 \times Au \text{ g/t}))$ under metal price assumptions of Copper - US\$3.00/lb, Gold - US\$1,800/oz. As the Bellas Gate project is an early-stage exploration project and there is insufficient metallurgical data to allow for estimation of recoveries, porphyry copper-gold recoveries are estimated based on multiple comparable porphyry-style copper-gold deposits (Alumbrera, Batu Hijau, Fish Lake, Mt Milligan, El Pachon, Agua Rica, Cerro Cassle and Skouries) which averaged 90% recovery for copper and 73% for gold.

C3 Metals is Current Expanding Tonnes in Jamaica at Grades In-line with Current Operating Mines

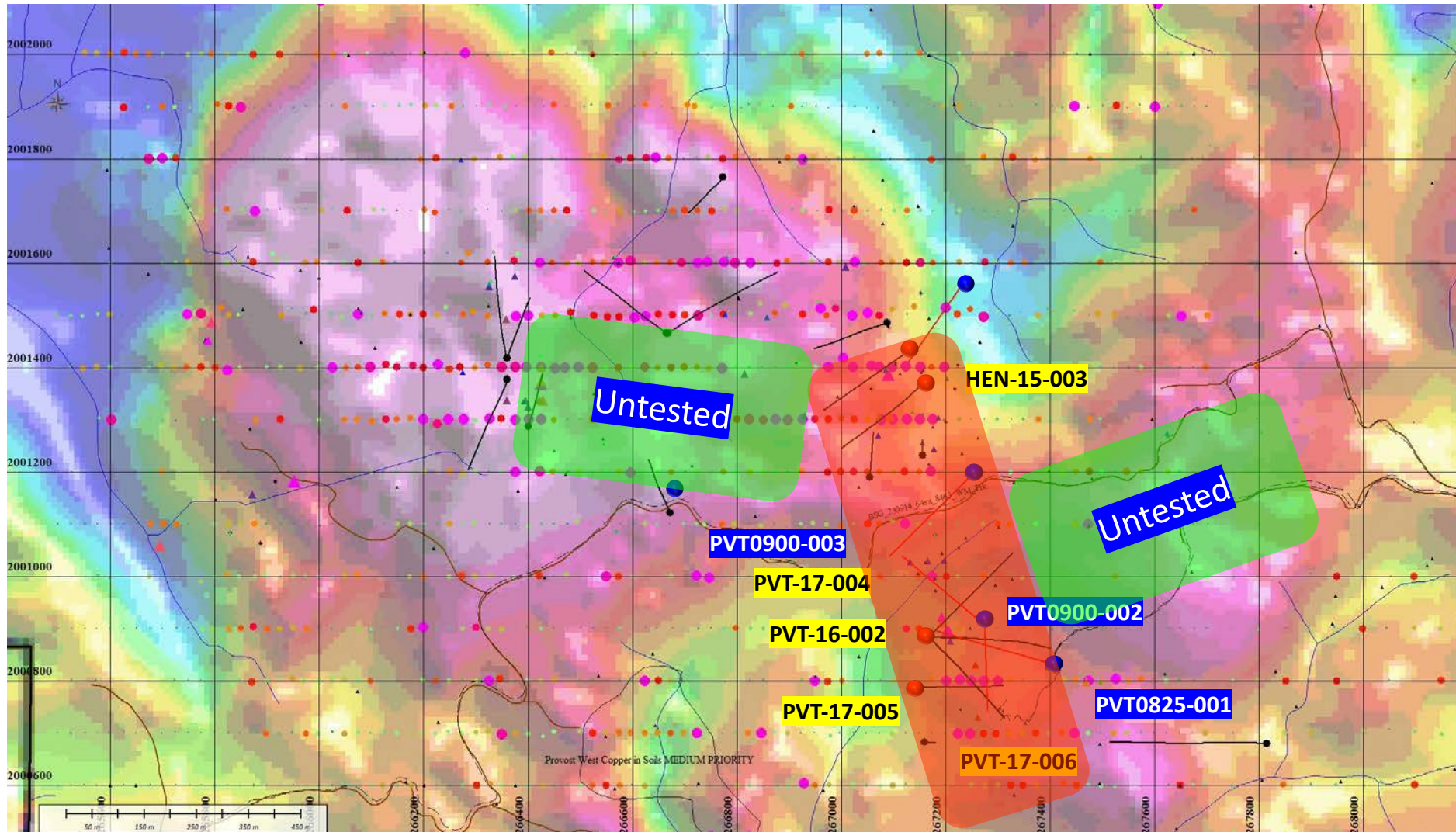
GT Gold Saddle Deposit Overlain on Provost Anomaly

GT Gold Saddle Anomaly 700m Length X 300m Wide

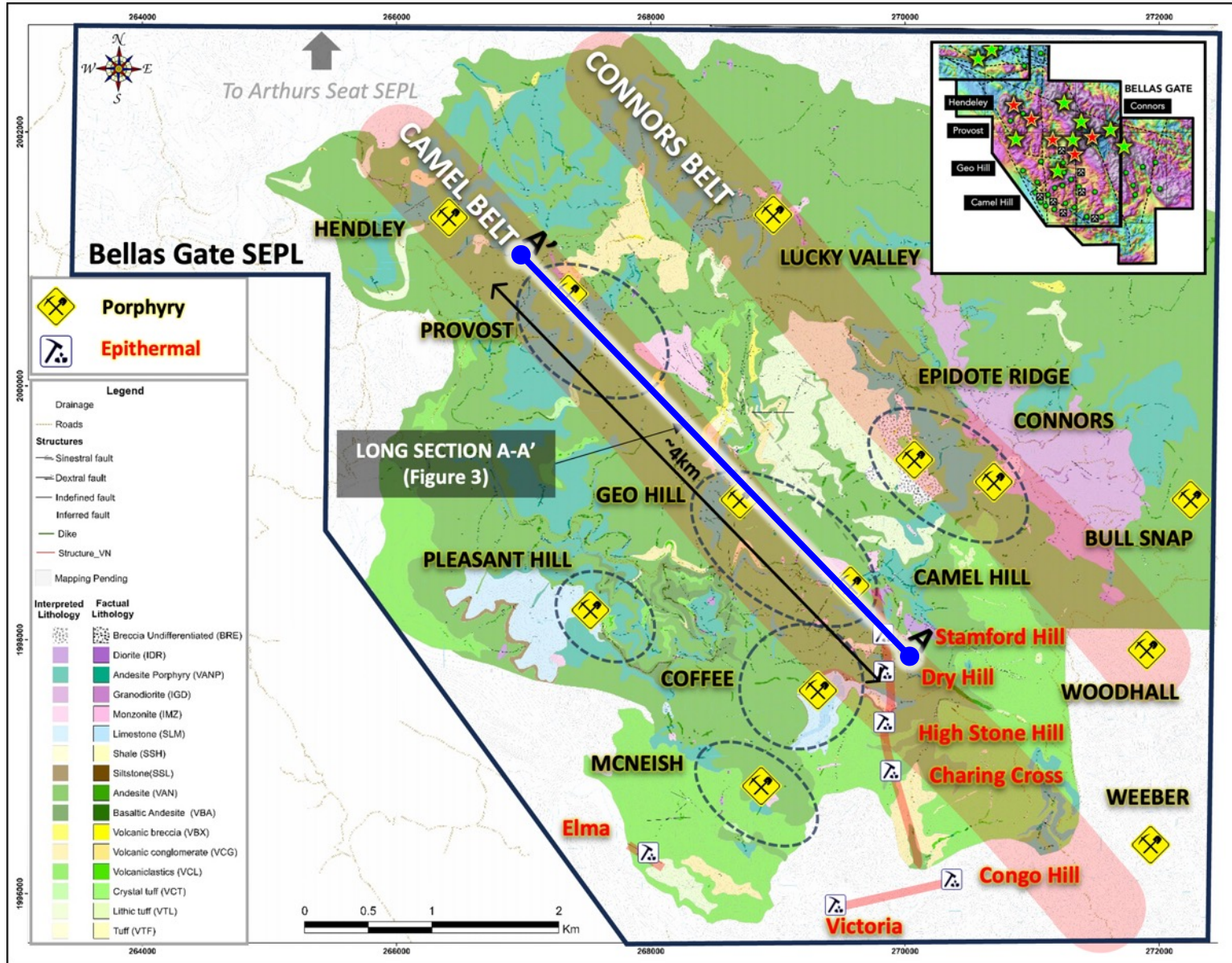


PROVOST GRADE AND TONNAGE POTENTIAL

Provost Main Anomaly +900m Length X 250m Wide With Potential to Grow



CAMEL HILL – GEO HILL - PROVOST TARGETS



OVER 4KM TREND WITH LIMITED SHALLOW DRILLING

CAMEL HILL PROSPECT

- ✓ Best Drill Assay CAM92-01, Weighted Avg
 - 236.2m @ 0.44% Cu and 0.20g/t Au
- ✓ Copper in Soil Anomaly 1400m X 600m
- ✓ Most Historical Drilling Done in BQ Core Size
- ✓ 75% of Holes Terminated in Mineralization

GEO HILL PROSPECT

- ✓ Best Drill Assay GEO92-01, Weighted Avg
 - 158.2m @ 0.32% Cu and 0.15/t Au
- ✓ Copper in Soil Anomaly 900m X 500m
- ✓ Only 5 Drill Holes and 2 Holes Terminated in Mineralization

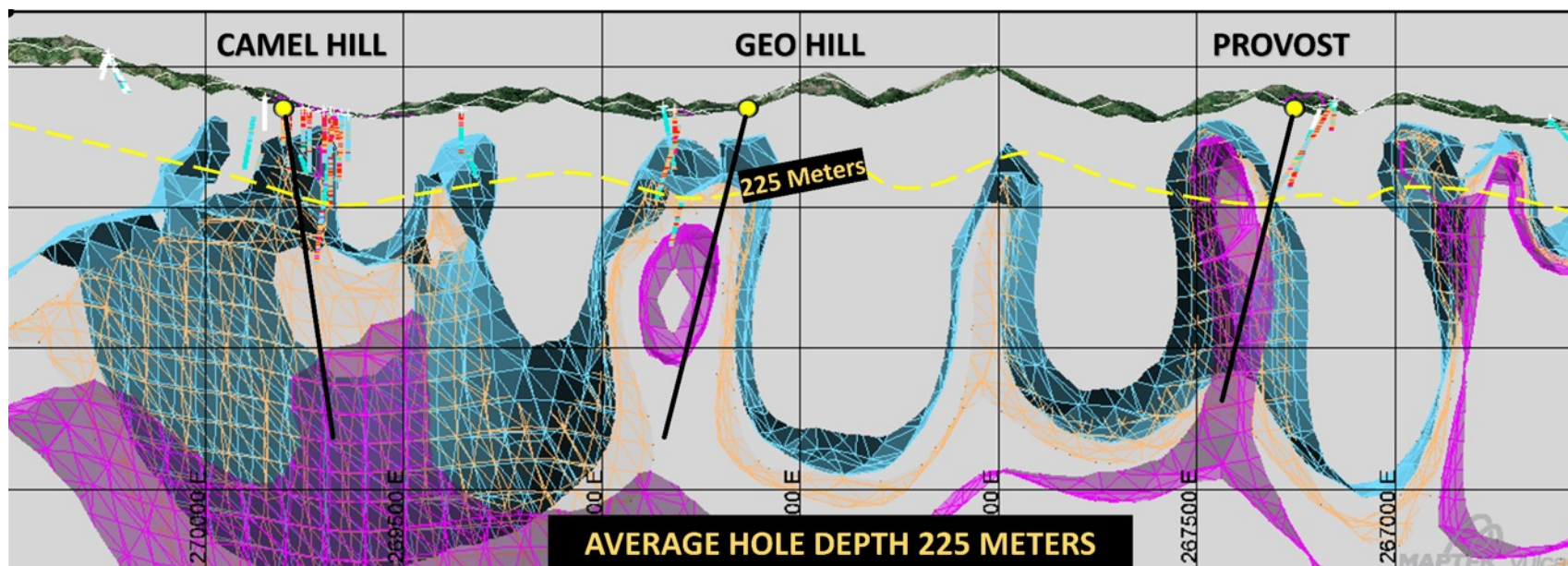
PROVOST PROSPECT

- ✓ Best Drill Assay PVT-16-002, Weighted Avg
 - 292m @ 0.30% Cu and 0.14g/t Au
- ✓ Copper in Soil Anomaly 700m X 600m
- ✓ Well Developed Argillic Alteration Zone and Only 9 Drill Holes

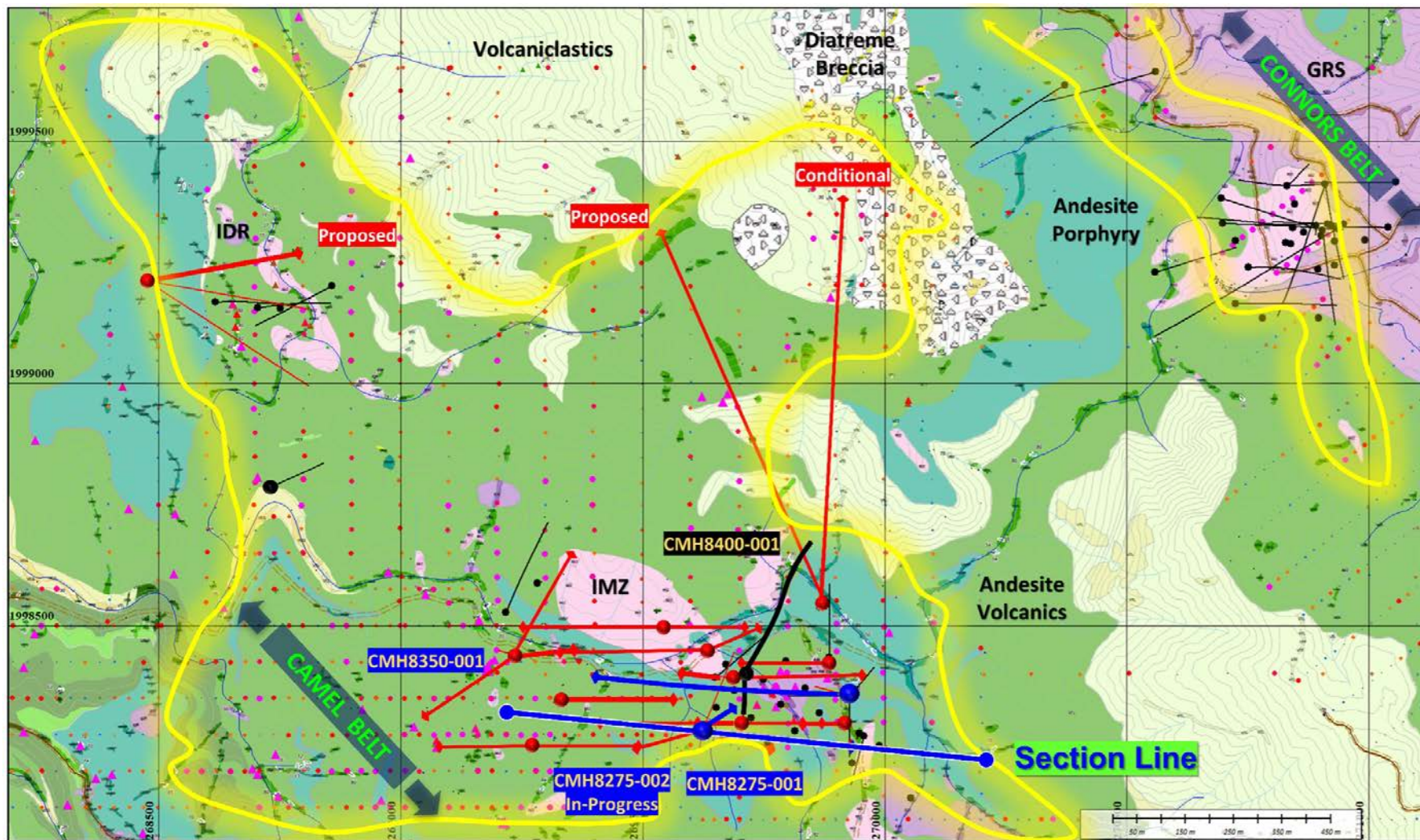
Project ID	Total Meters	Total Holes	Average Depth
Camel Hill	6,828	31	220

Project ID	Total Meters	Total Holes	Average Depth
Geo Hill	1,631	5	326

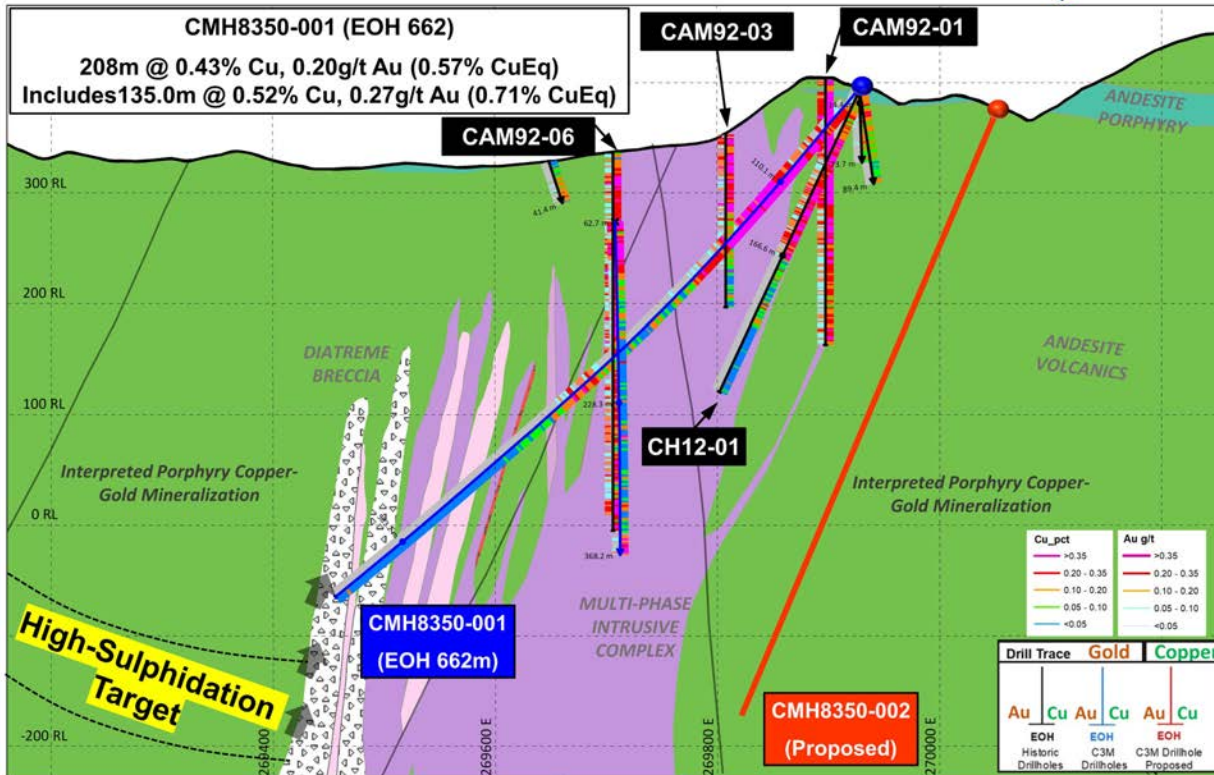
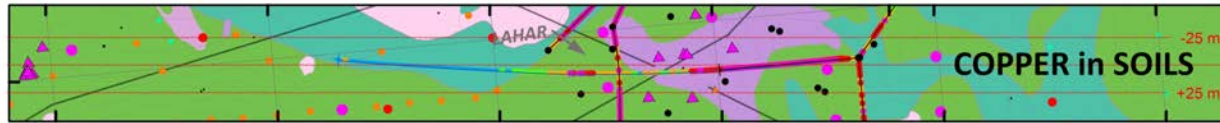
Project ID	Total Meters	Total Holes	Average Depth
Provost	2,529	9	280



CAMEL HILL PLAN MAP VIEW



CAMEL HILL CROSS SECTION - CMH8350-001



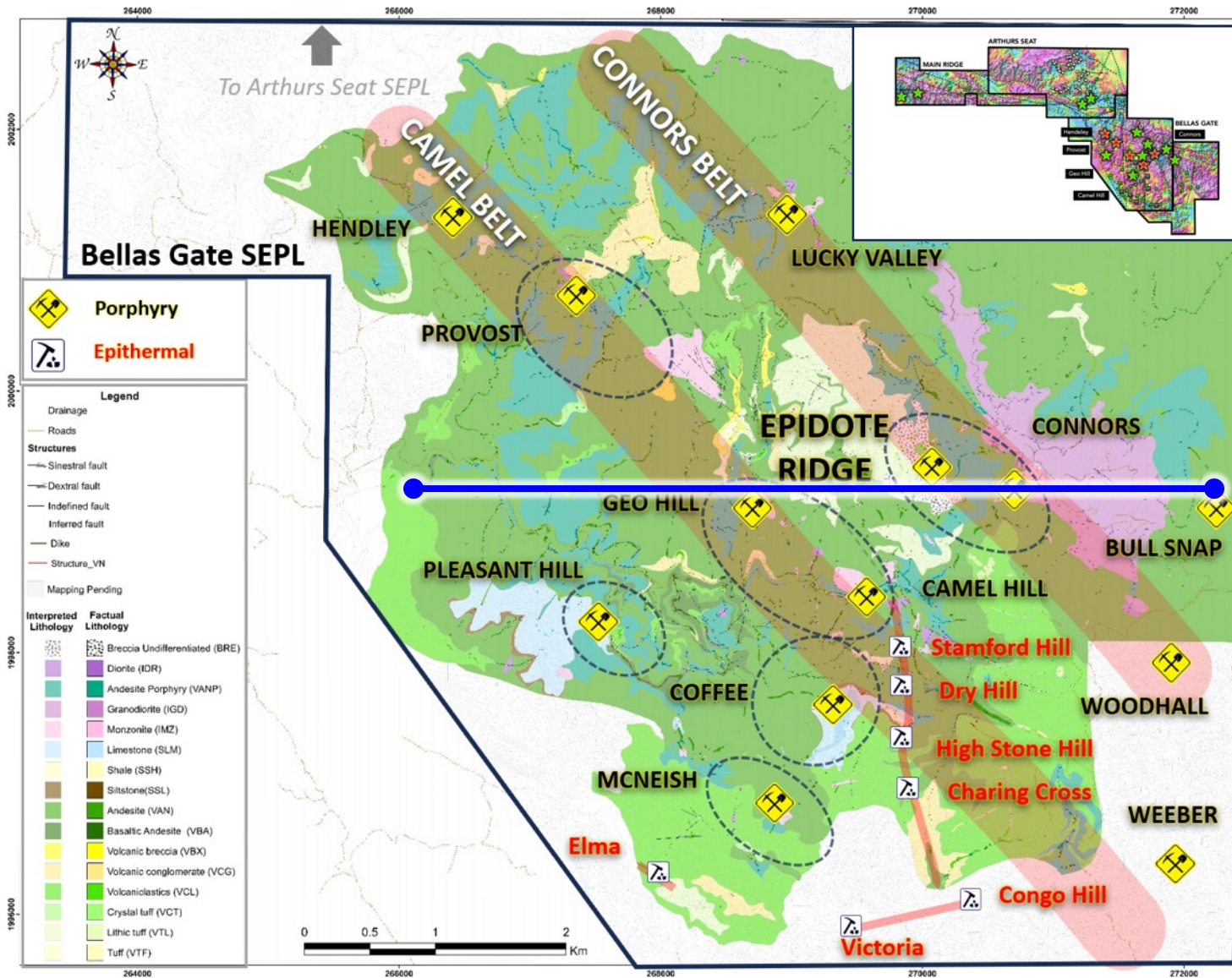
What We Have Learned At Camel Hill

- ✓ Both andesite (green) and diorite (purple) units are mineralized
- ✓ Higher grades in andesite (green) near surface due to interpreted hypogene enrichment
- ✓ Epithermal veins overprint the porphyry mineralization
- ✓ Multi-pulse system confirmed
- ✓ Multiple pyrite shells

¹ Copper equivalent (CuEq) calculation is for reporting purposes only and was determined based on $CuEq (\%) = Cu (\%) + (0.7079 \times Au \text{ g/t})$ under metal price assumptions of Copper - US\$3.00/lb, Gold - US\$1,800/oz. As the Bellas Gate project is an early-stage exploration project and there is insufficient metallurgical data to allow for estimation of recoveries, porphyry copper-gold recoveries are estimated based on multiple comparable porphyry-style copper-gold deposits (Alumbra, Batu Hijau, Fish Lake, Mt Milligan, El Pachon, Agua Rica, Cerro Casle and Skouries) which averaged 90% recovery for copper and 73% for gold. A nominal cut-off of 0.2% CuEq is used for the reporting of potentially significant intercepts and higher-grade cut-offs are 0.4% CuEq. Maximum contiguous dilution within each intercept is 10m for 0.2% and 0.4% CuEq. Samples have been composited to two and maximum three metre lengths.

BELOW EPIDOTE RIDGE IS POTENTIAL SOURCE

Multiple Mineralized Porphyry Apophyses Encircle Epidote Ridge



NEXT SLIDE
SECTION VIEW IP-
CHRG – LN2

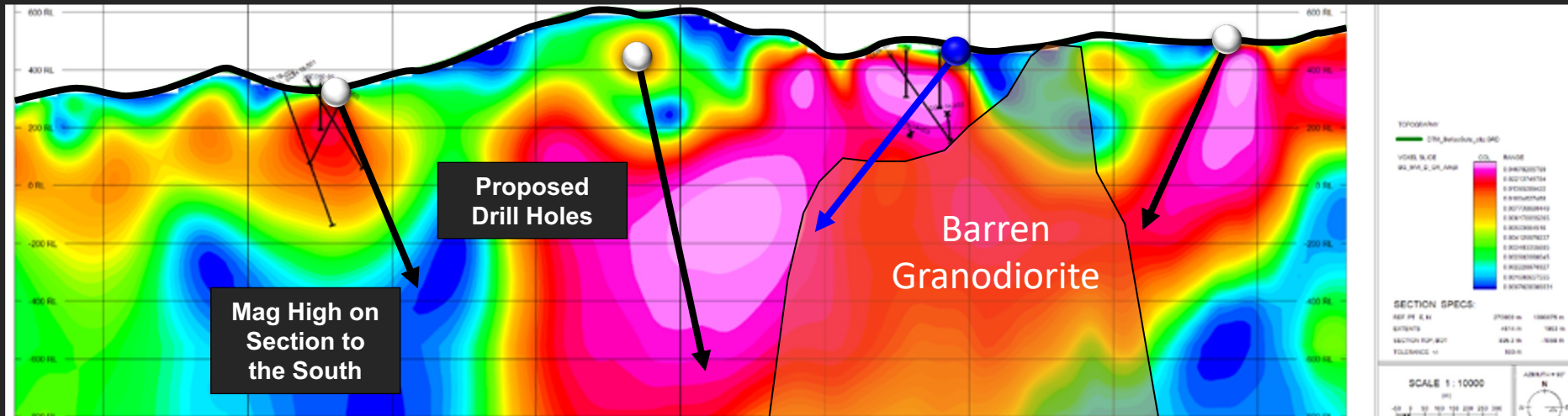
EPIDOTE RIDGE - GEO HILL - CONNORS CONNECTION

Mag and IP Converge with Depth, Interpreted Bornite-Core

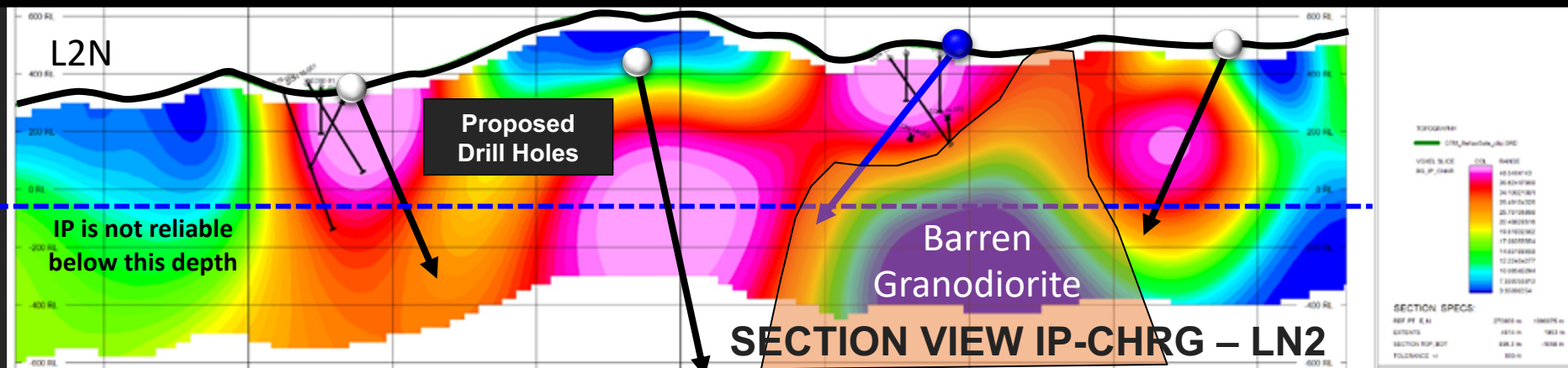
GEO HILL PORPHYRY

EPIDOTE RIDGE

CONNORS PORPHYRY



**C3 Metals' Drill Hole September 2022 CON9325-001 Assayed
309m @ 0.44% copper & 0.33 g/t gold**

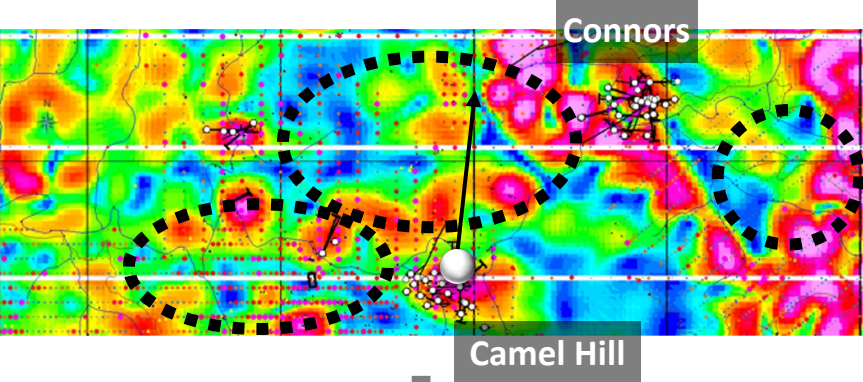


SECTION VIEW IP-CHRG - LN2

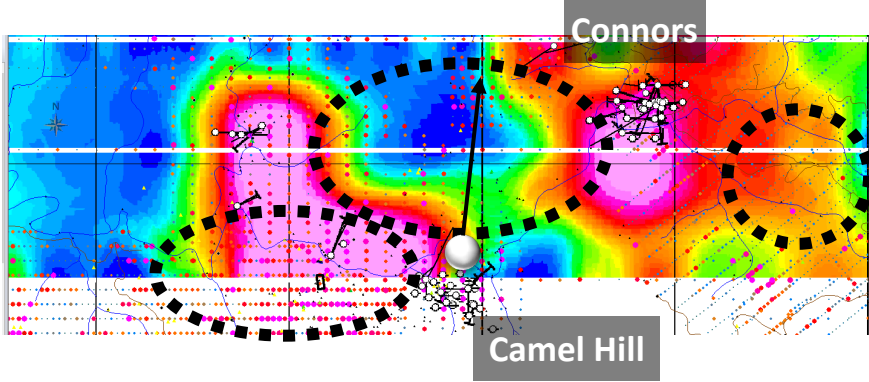
MULTIPLE KNOWN PORPHYRIES MAY CONVERGE AT DEPTH

All Drilling Currently Relatively Shallow

MAGNETIC VECTOR INVERSION -100m

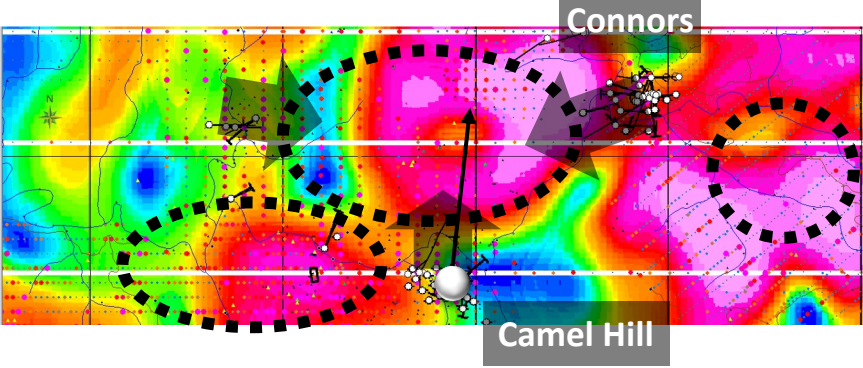


IP CHARGEABILITY -100m

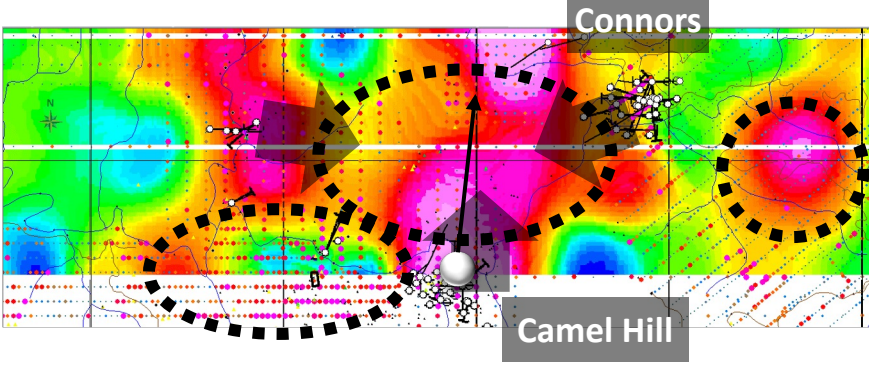


Anomalies Converge at Depth
Below Epidote Ridge

MAGNETIC VECTOR INVERSION -400m

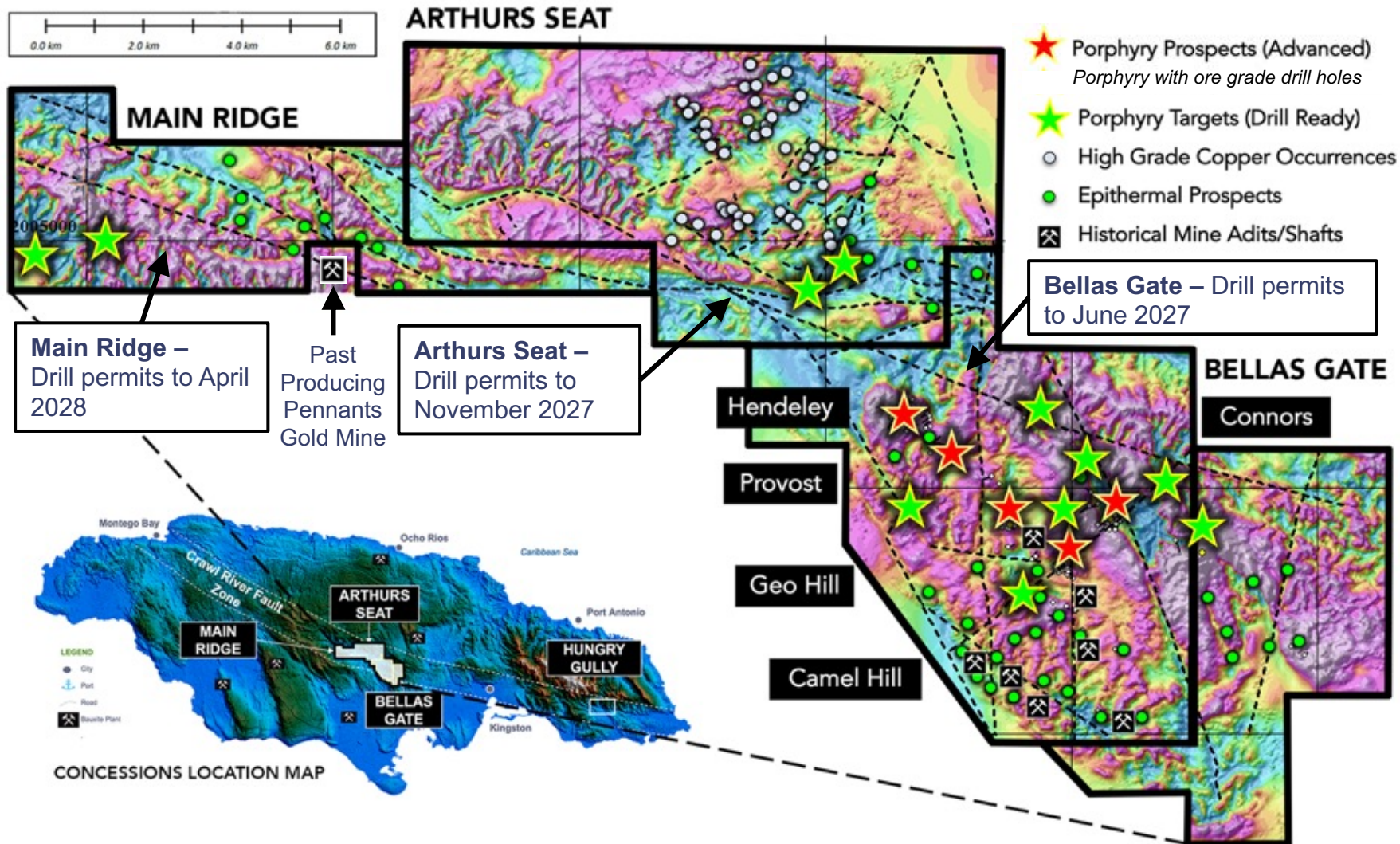


IP CHARGEABILITY -400m

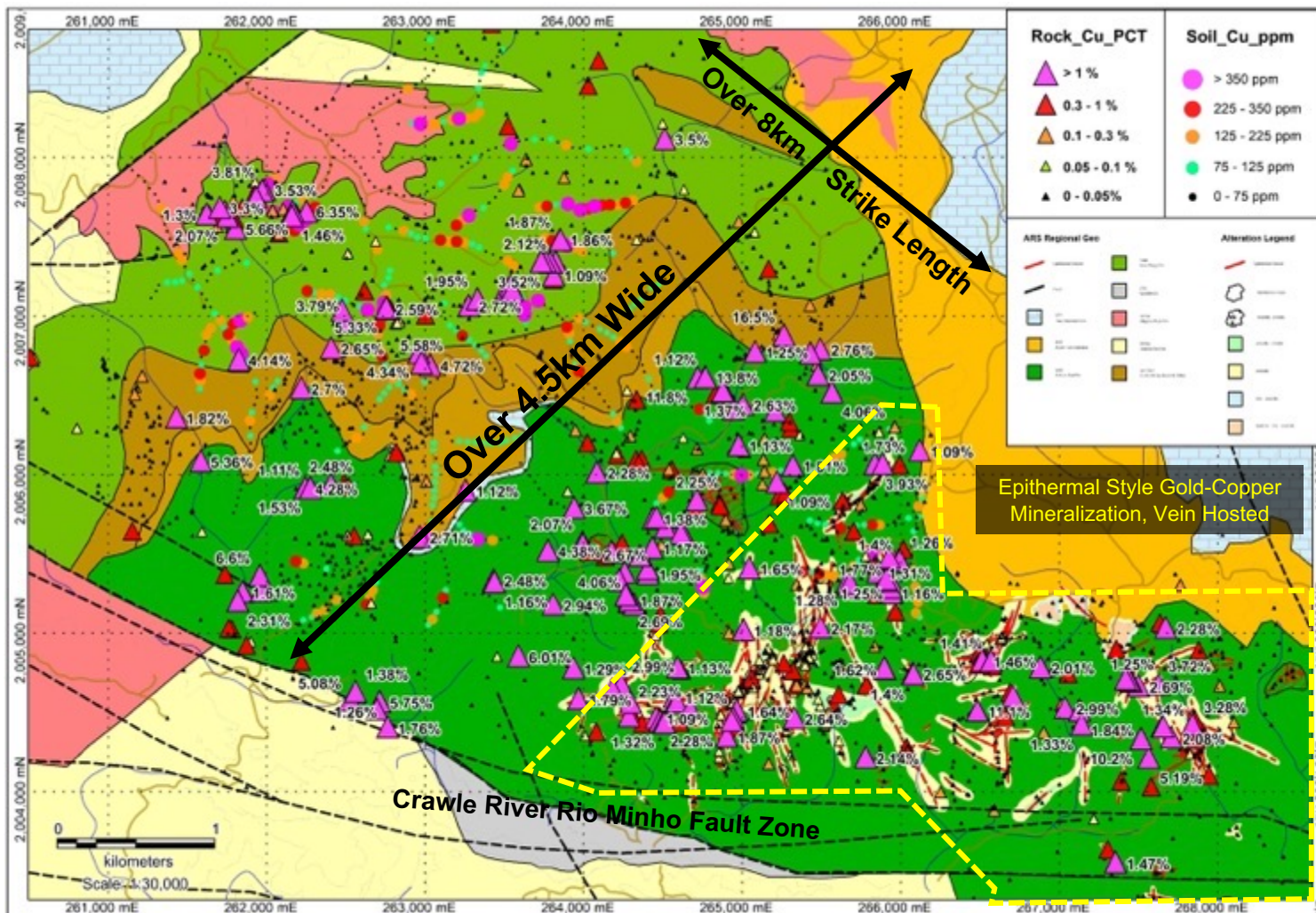


C3 METALS IN JAMAICA: A New & Emerging District

16 Porphyry & 40 Epithermal Targets Identified Over 30km Strike



ARTHURS SEAT DISCOVERY - 2022



5.2% copper & 0.81 g/t gold



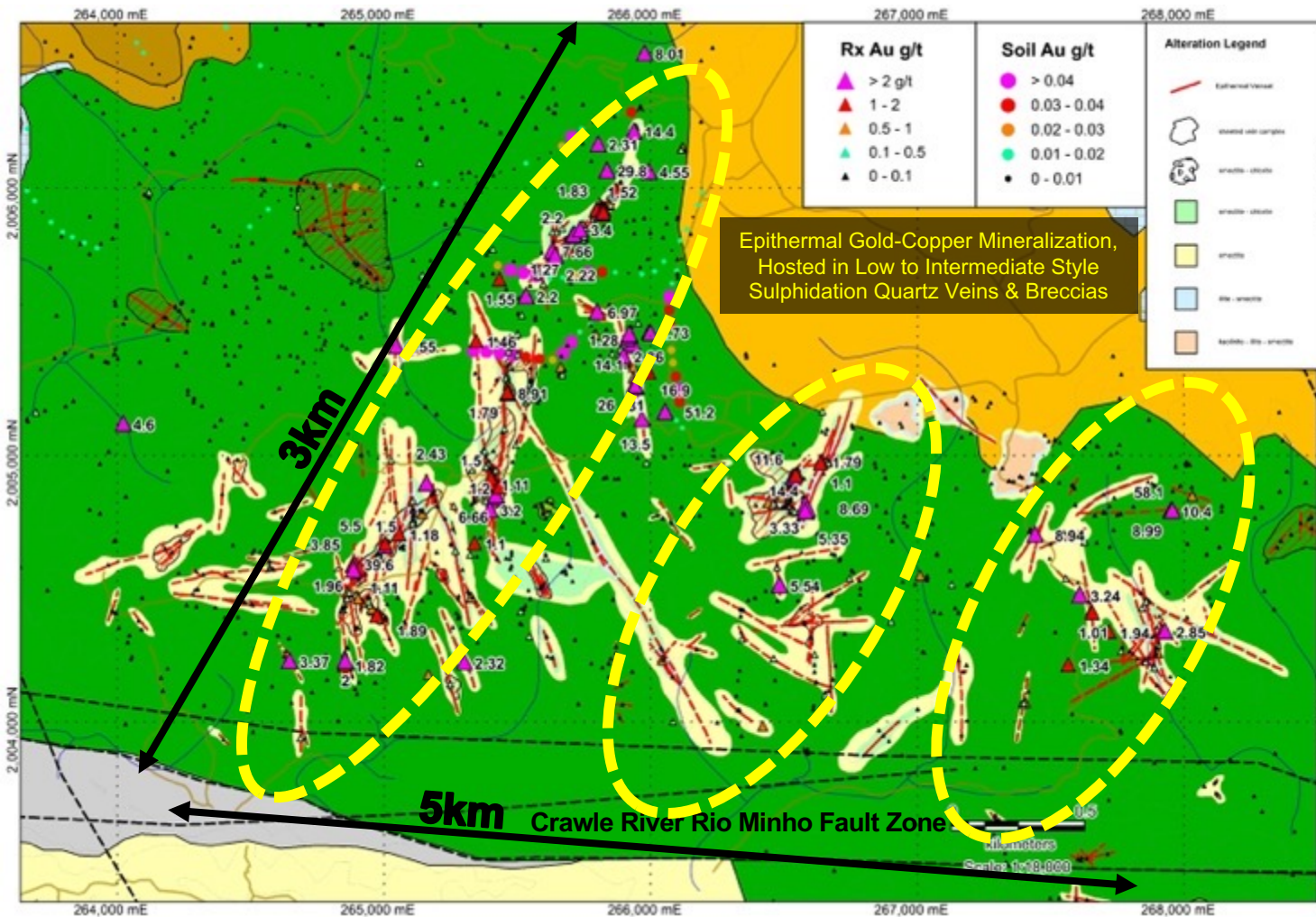
16.5% copper, 4,890 g/t silver & 0.50 g/t gold

Discovered 8.0km by 4.5km Copper-Gold Zone



ARTHURS SEAT - EPITHERMAL VEIN SWARM

5km by 3km Area



11.6 g/t gold



29.8 g/t gold



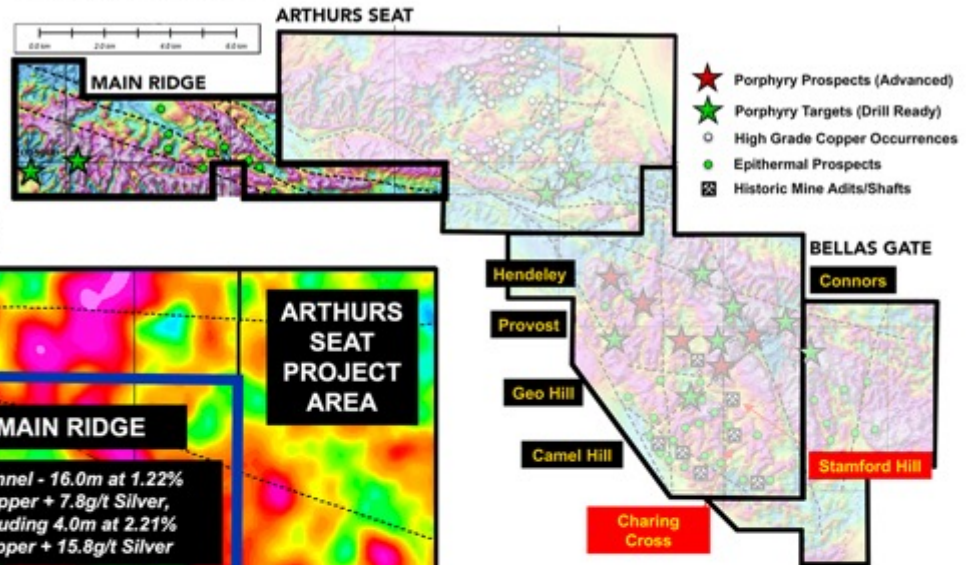
14.4 g/t gold

Discovered 5km by 3km Epithermal Vein Swarm

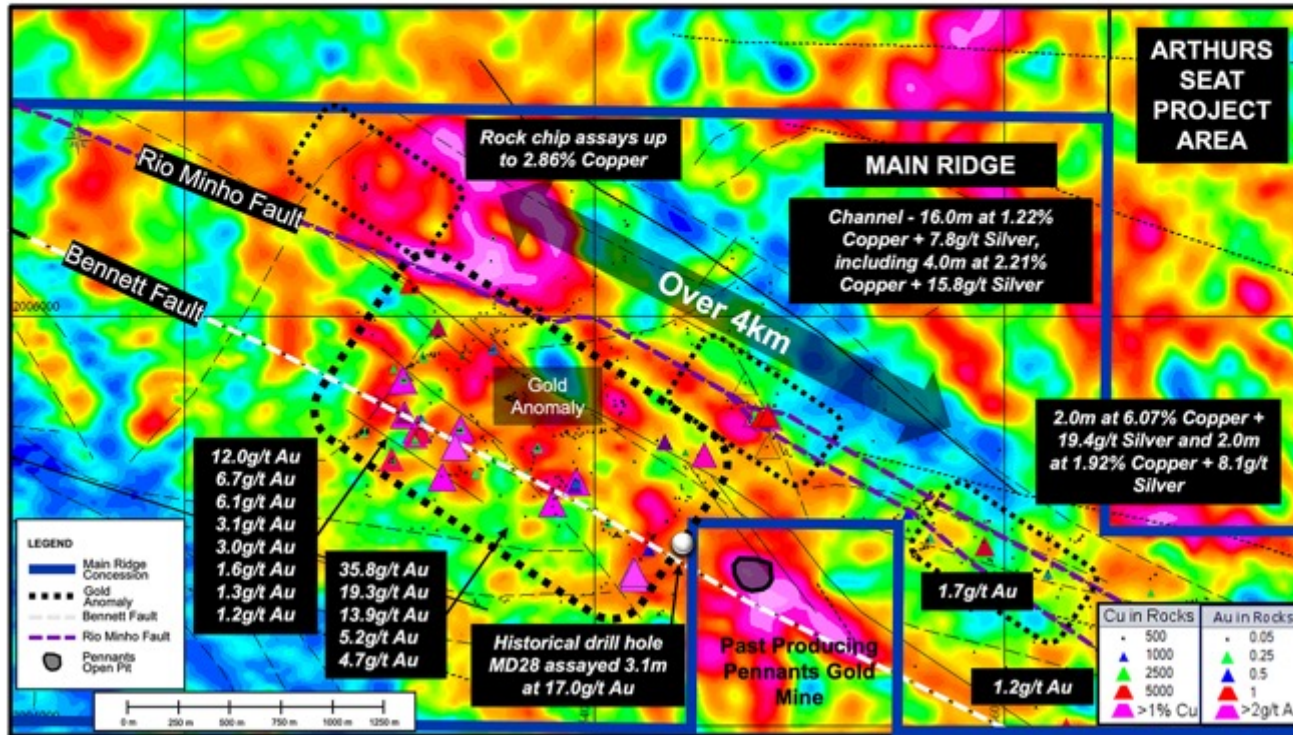
MINERALIZATION EXTENDS BEYOND PENNANTS MINE

Multiple High-Grade Gold & Copper Zones Field Confirmed

CONCESSIONS MAP



MAIN RIDGE GOLD AND COPPER ZONES OVER 4KM



C3 METALS IN JAMAICA: SUMMARY

- Secured over 20,000 hectares of prospective copper-gold exploration licenses in an under-explored, mining-friendly jurisdiction
- Have identified 16 porphyry and 40 epithermal prospects
- Actively drilling at Bellas Gate with two drill rigs
- 8,500m program underway
- Anticipate steady flow of assay results through into 2024
- Direct drilling cost to date: ~CAD\$40/m with company-owned rig

C3 Metals

Focused on creating substantive value
through the discovery and development of
LARGE COPPER-GOLD DEPOSITS



PERU: A Copper Legacy



2nd

Largest
Worldwide
Copper Producer



11%

of Global Copper
Production



10%

of Peru's GDP



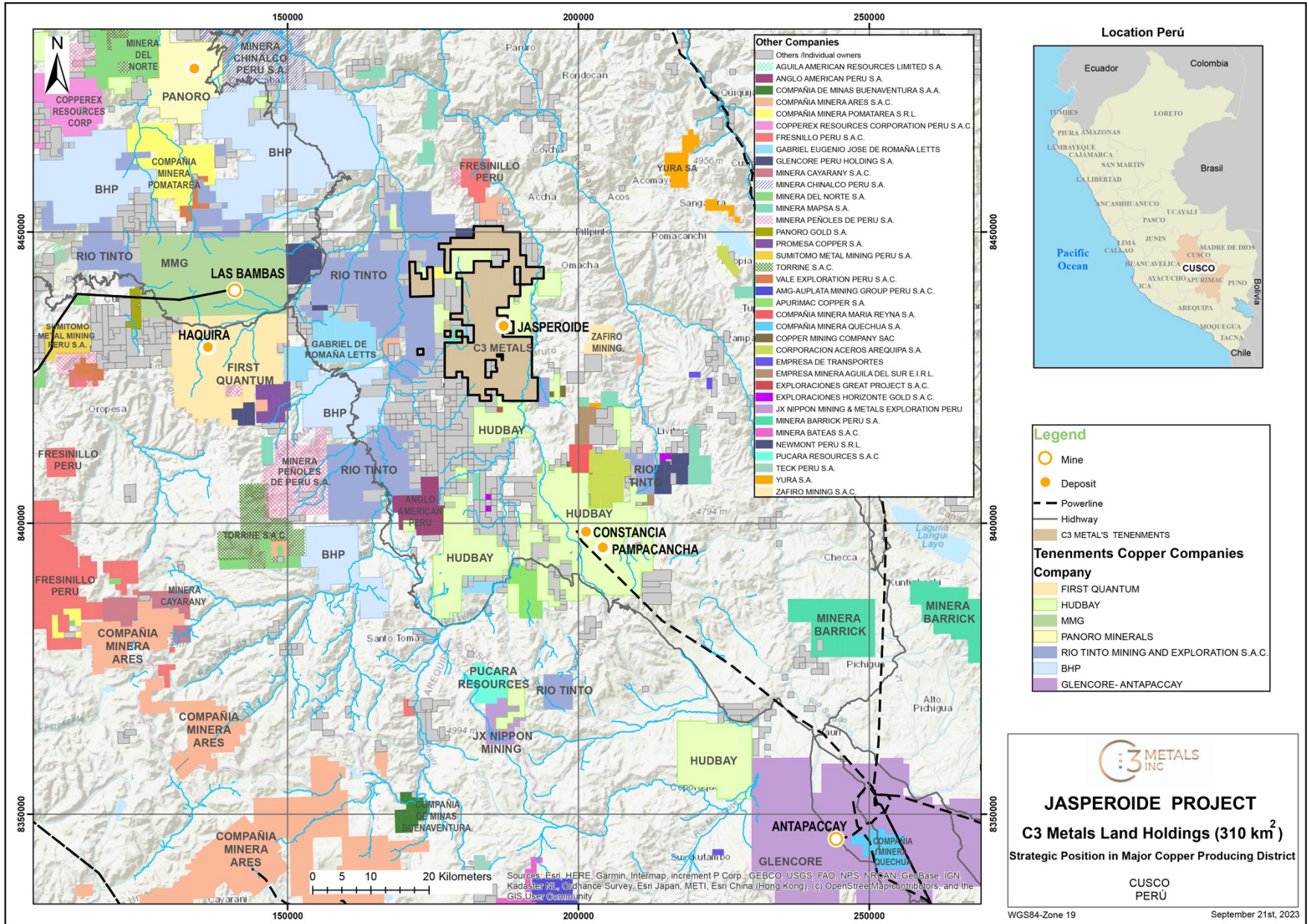
2.2M

metric tonnes
produced in 2022

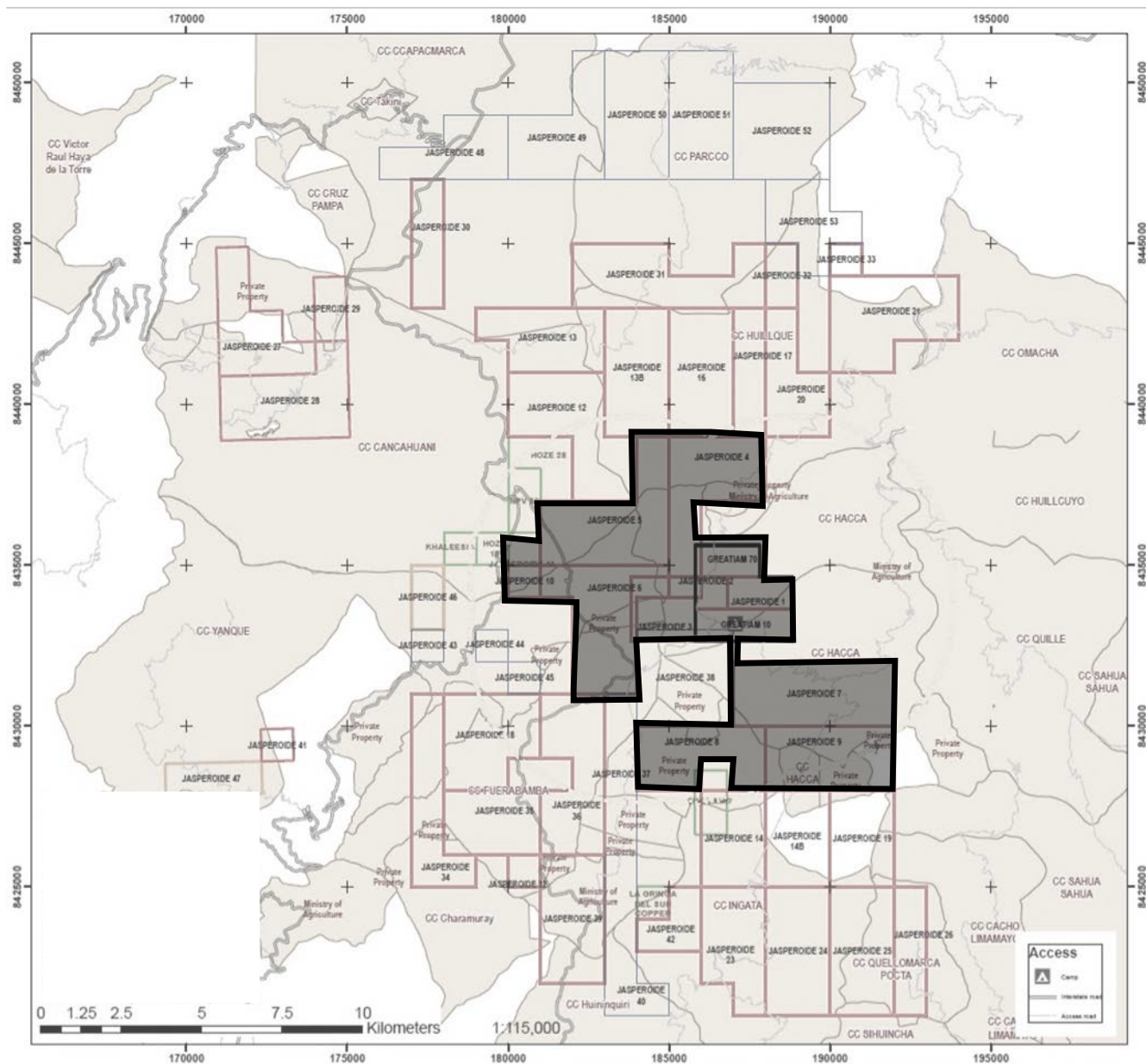
Rich Mining History

- History of copper mining dating back **thousands of years**.
- Attracts significant investments from international mining companies due to the country's **favorable geology and mining-friendly policies**.
- Cerro Verde Mine - one of the **largest copper mines in the world** in operation since the 1970s.
- Continues to thrive with **ongoing exploration projects** and the **discovery of new copper deposits**

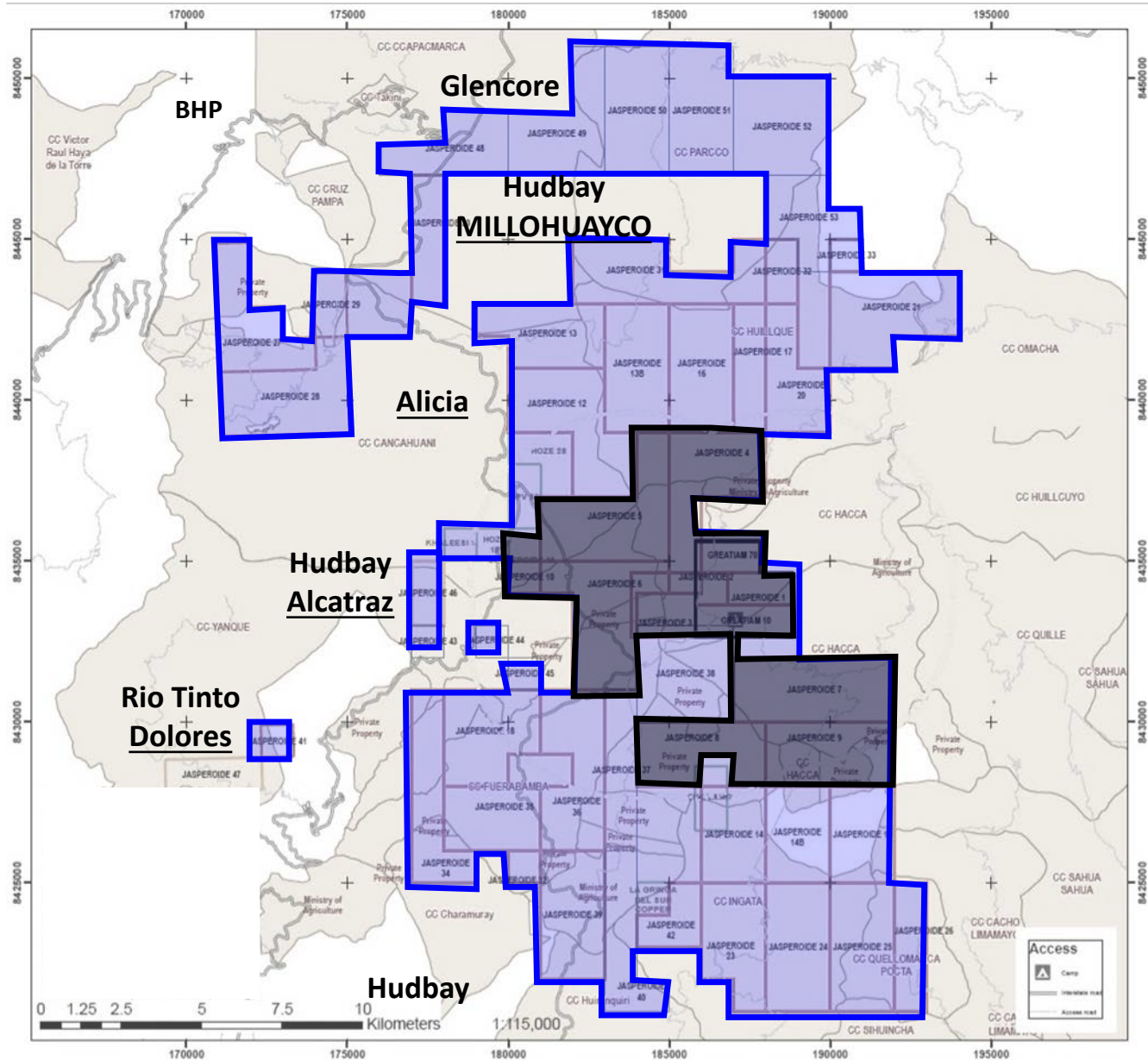
C3 Metals in PERU: Strategic 30,000-Hectare Land Package



C3 Metals in PERU: Land Package in 2021

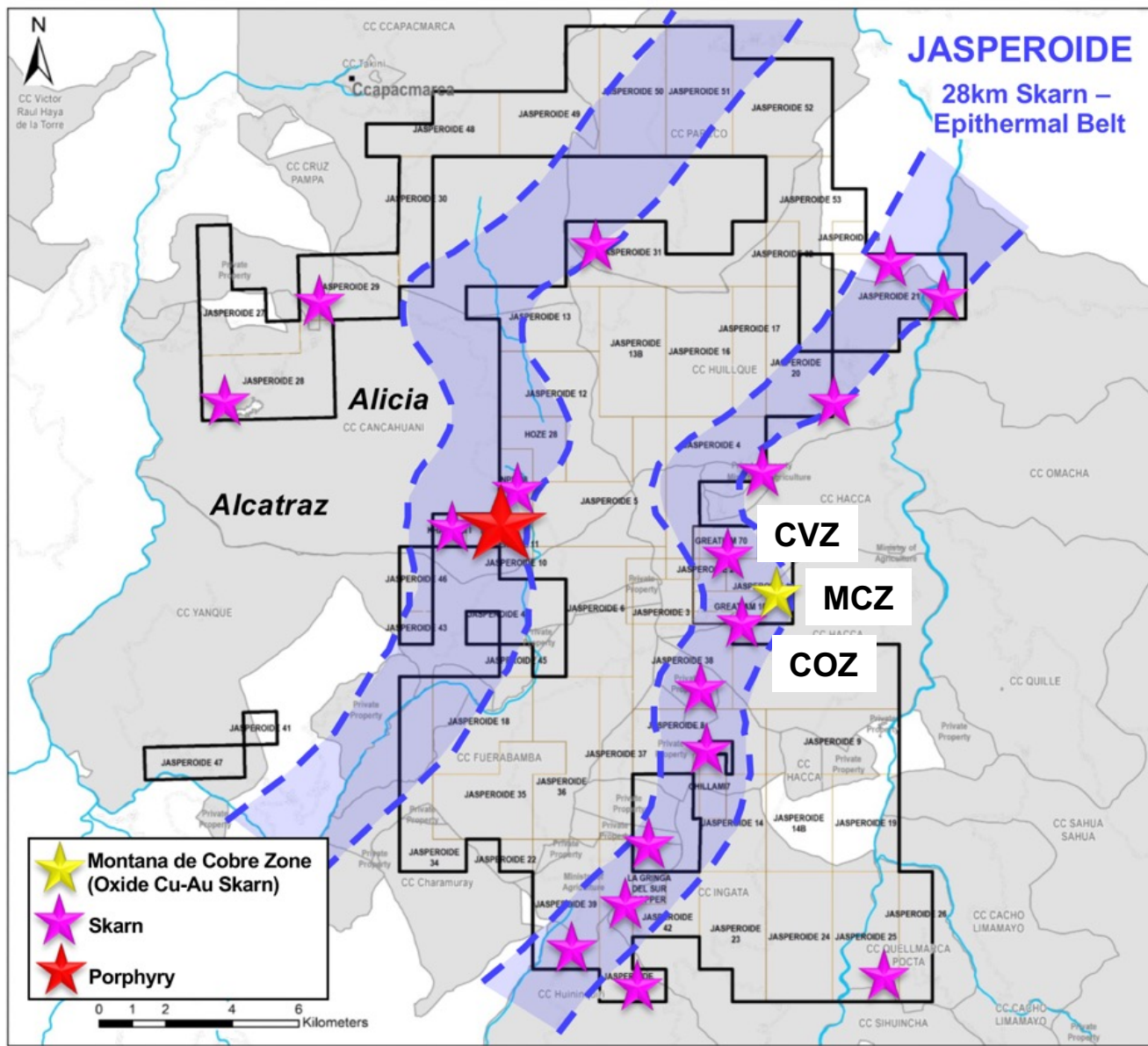


C3 Metals in Peru: Land Package increased 426% in Two Years



**DISTRICT SCALE
PORPHYRY/SKARN POTENTIAL**
Two Parallel, Copper and Gold Mineralized Belts

KHALEESI
Porphyry – Skarn-
Epithermal Belt



MAIDEN RESOURCE - Montaña de Cobre Zone

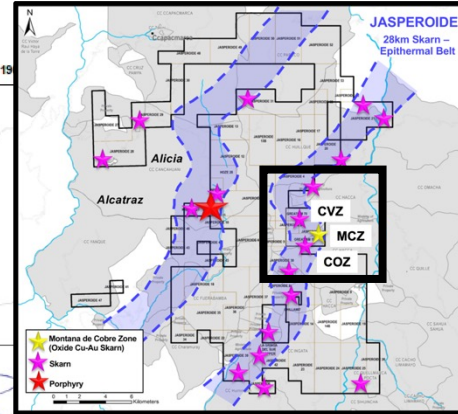
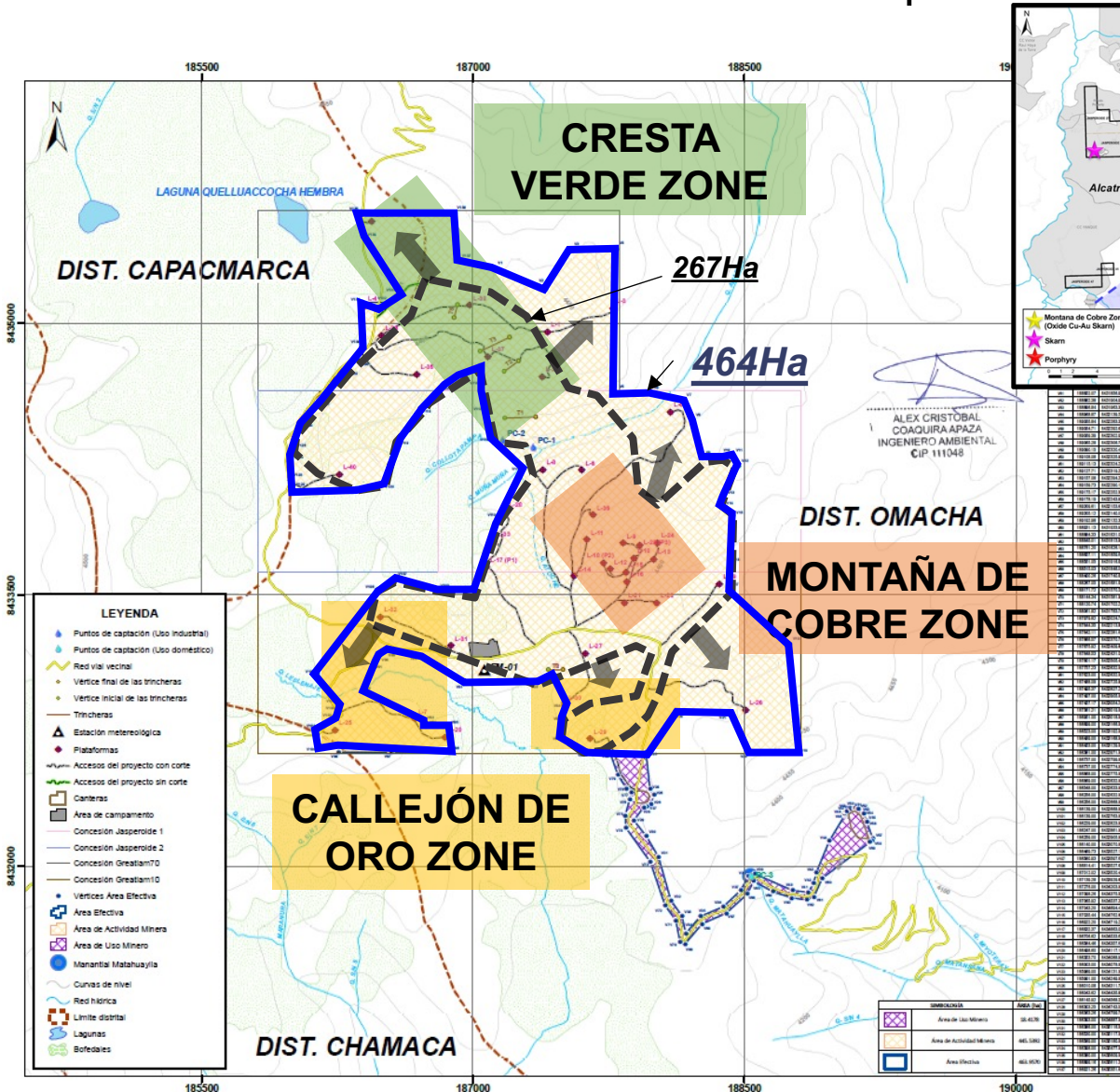
Mineral Resource Category	Tonnes (Kt)	Copper Grade (%)	Gold Grade (g/t)	Contained Copper (M lbs)	Contained Gold (K oz)	Total Tonnes in Conceptual Pit
Measured	28,636	0.60	0.24	380.0	218.2	
Indicated	23,304	0.37	0.15	189.1	108.6	
Measured & Indicated	51,940	0.50	0.20	569.1	326.8	97,057
Inferred	4,005	0.32	0.11	28.3	14.6	

Notes:

1. The Mineral Resource estimate has an effective date of 1 May 2023 and the estimate was prepared using the definitions in CIM Definition Standards (10 May 2014).
2. The CCPS used to calculate the Mineral Resource estimate uses a copper price of \$3.75/lb, a copper recovery of 75%, an open pit mining unit cost of \$2.35/t, processing costs of \$4.66/t and G&A cost of \$1.37/t. The breakeven cut-off grade using these parameters is 0.14% copper.
3. Mineral Resources are reported in relation to a CCPS in order to demonstrate reasonable prospects for eventual economic extraction, as required by the definition of Mineral Resource in NI 43-101; mineralization lying outside of the pit shell is excluded from the Mineral Resource. Potential revenue from gold was not considered for the development of the constraining pit shell; the Mineral Resource estimate is not dependent on recovering gold.
4. The quantity and grade of reported Inferred Mineral Resources in this estimate are uncertain in nature and there has been insufficient exploration to define these Inferred Mineral Resources as Indicated or Measured Mineral Resources.
5. All figures are rounded to reflect the relative accuracy of the estimate and therefore numbers may not appear to add precisely.
6. Mineral Resources that are not Mineral Reserves do not have demonstrated economic viability.
7. The Mineral Resource estimate is prepared by IMC of Tucson, AZ, under the direction of Michael G. Hester, FAusIMM, a Qualified Person.

MODIFIED DRILL PERMIT APPROVED SEPTEMBER 2023

74% increase in area and additional 24 platforms and 53 Drill Holes



EXPANDED PERMIT AREA

- ✓ 74% increase in permit zone: from 267Ha to 464Ha
- ✓ Additional 24 platforms and 53 drill holes
- ✓ 2 additional skarn targets
- ✓ Potential porphyry blind target identified as possible feeder source

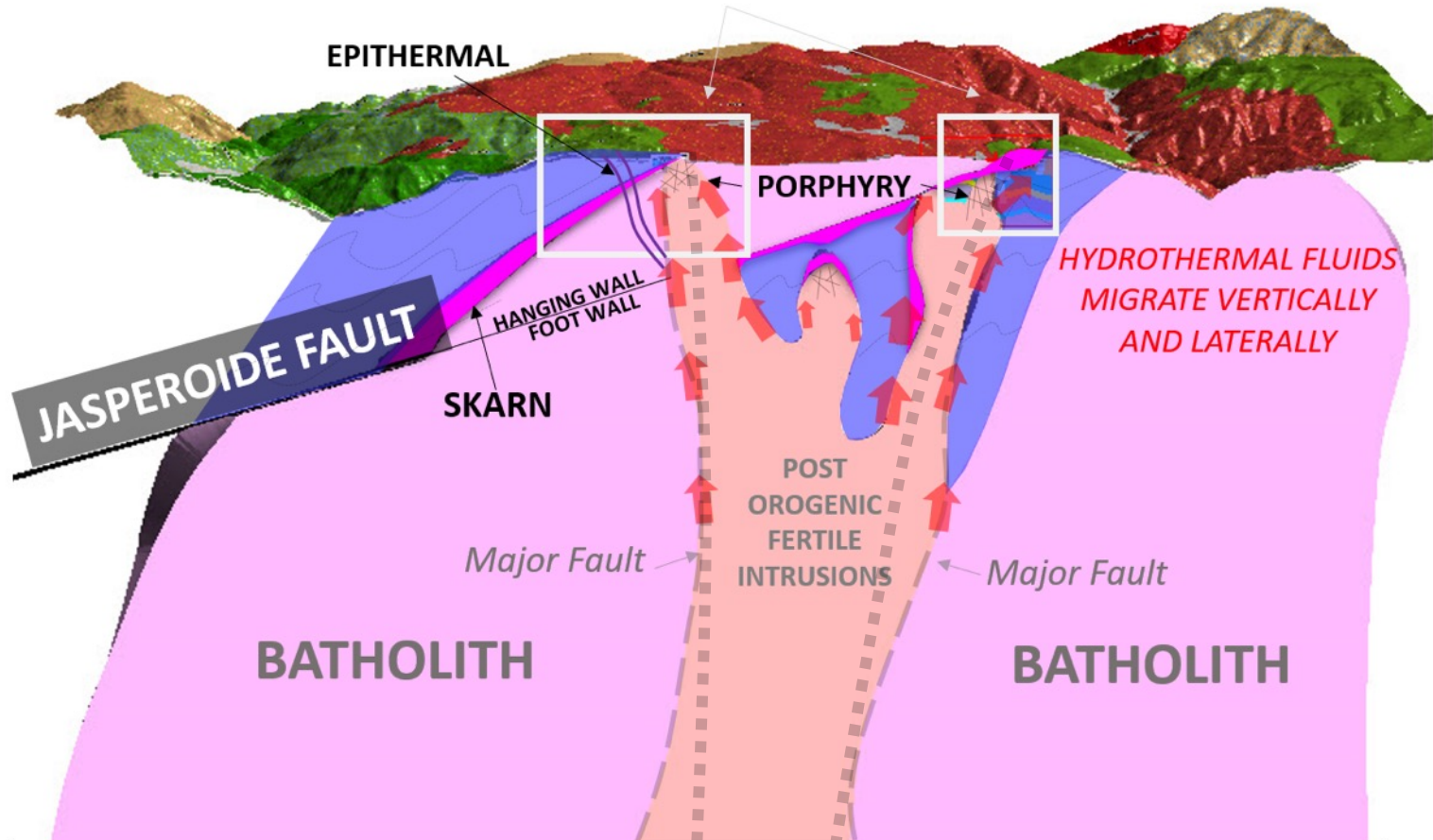
INTRUSIONS EXPLOIT “DEEP SEATED” FAULTS

Parallel Porphyry, Skarn & Epithermal Mineralized Belts

KHALEESI BELT

JASPEROIDE BELT

NESTED & NEAR SURFACE COPPER-GOLD PORPHYRY, SKARN & EPITHERMAL DEPOSITS



Copper and Gold-Rich Hydrothermal Fluids “Punch Through” or “Migrate” along the Jasperoide Thrust Faults, Two Systems Appear Spatially Associated

IS MAGNETITE ALTERATION IMPORTANT?

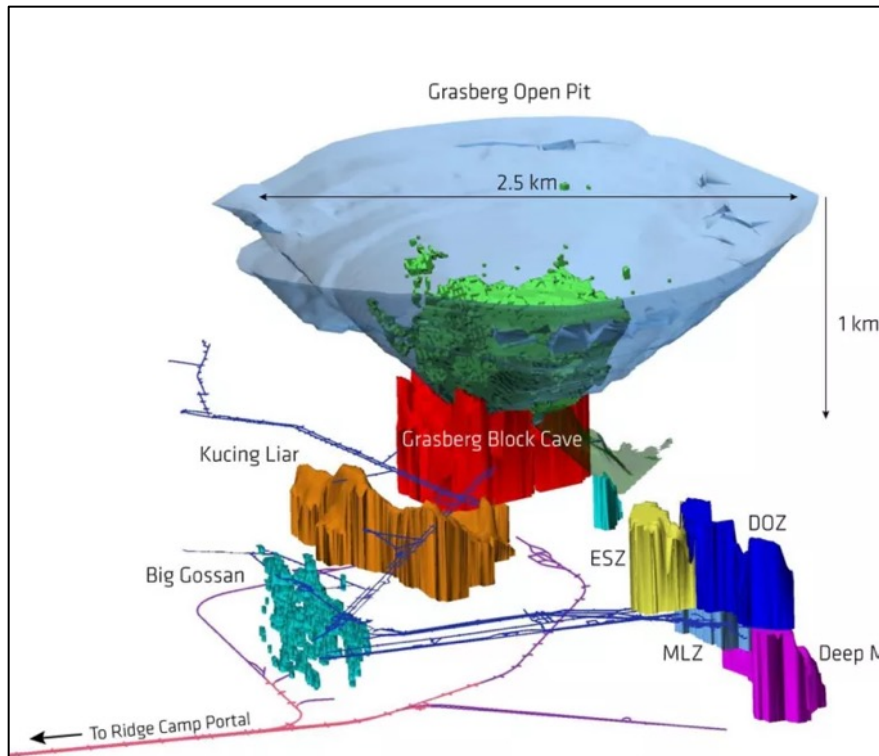
Estimated +1 Billion Tonnes of Magnetite Skarn Over 28km Trend

Grasberg – +10BT of Copper-Gold Mineralization



Est. +2BT Hydrothermal Magnetite

One of largest copper-gold Porphyry / Skarn reserves
Multiple Porphyries and Skarns over 10km Trend



Source – FCX Website

Jasperoide & Khaleesi Copper-Gold Belts



**Est. +1BT Hydrothermal Magnetite
Two Parallel Skarn & Porphyry Belts,**

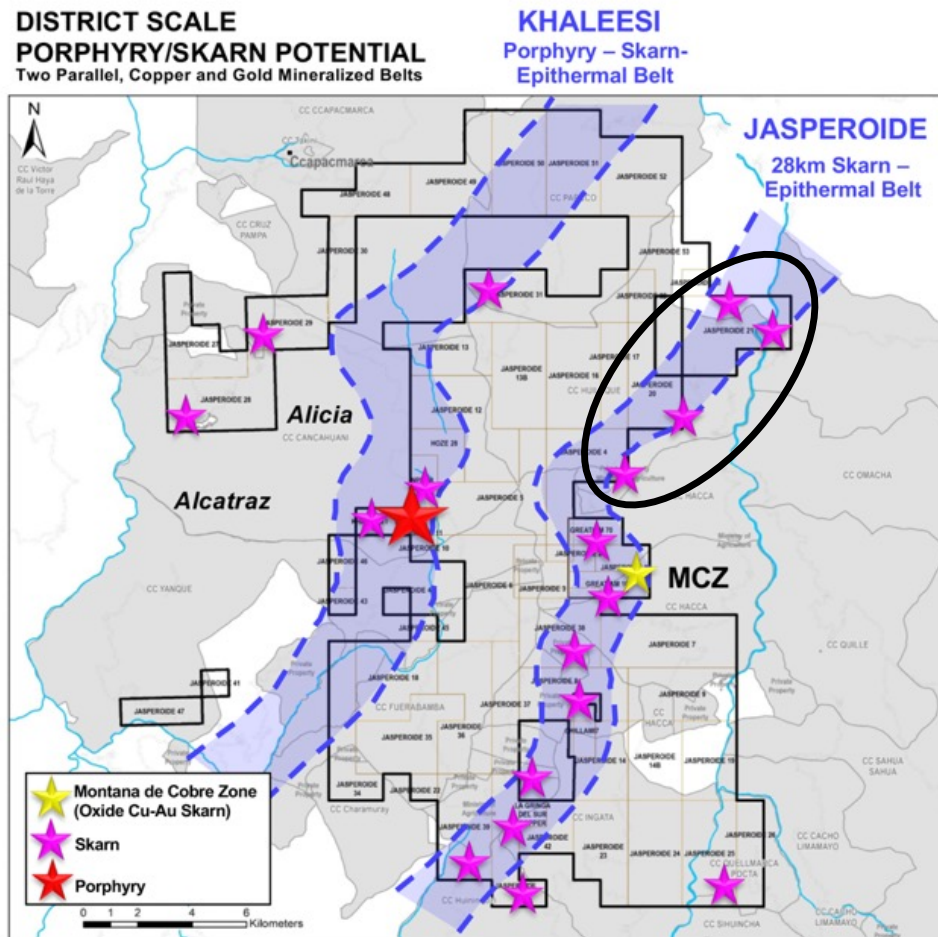
Multiple Porphyries and Skarns over 28km Trend



NORTHERN JASPEROIDE BELT:

Big Tonnage is Known but Not Explored For Copper

- 632M tonnes of mineralized material identified in northern Jasperoide Belt
- Indicated 55.6Mt at 46.75% Fe; cut-off 20.0% Fe (Orcopura)
- Inferred 576.4 Mt at 43.44% Fe; cut-off 13.4% Fe (Orcopura, Huillque, Bob1 and Aurora)
- Never explored for copper, but reports indicate copper is present

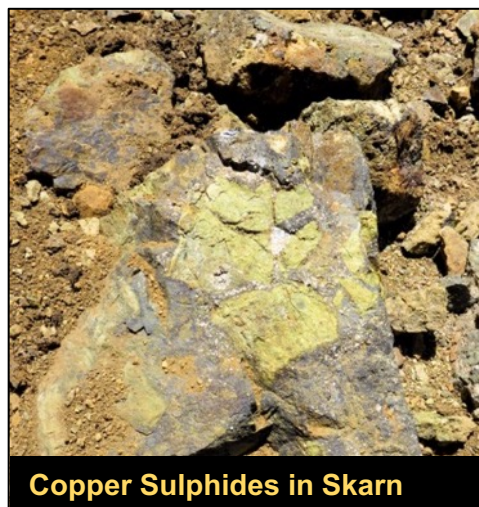


SOUTHERN JASPEROIDE BELT:

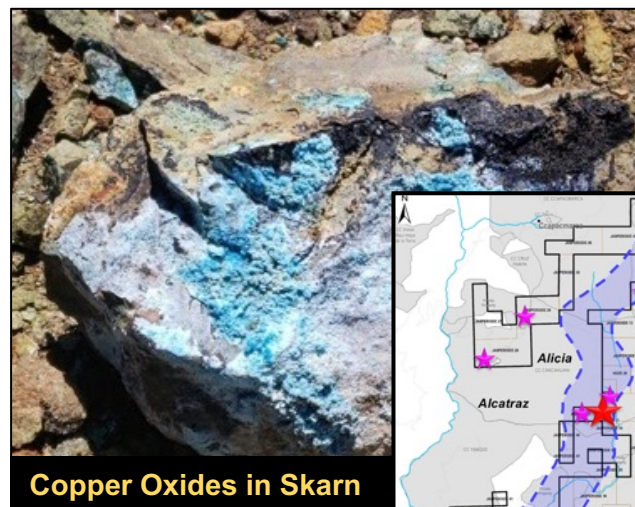
Extensive Informal Mining on Multiple Copper-Gold Skarn Bodies



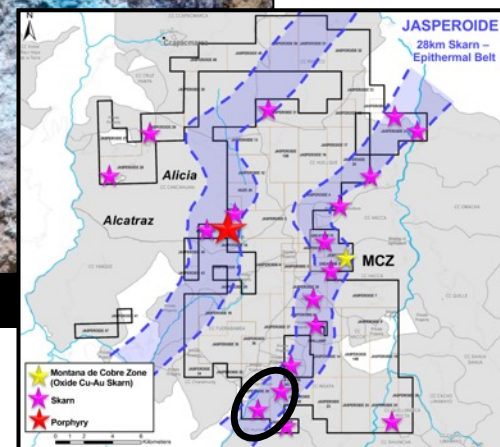
Epithermal Veins



Copper Sulphides in Skarn



Copper Oxides in Skarn



KHALEESI PROJECT

Skarn, Epithermal and Porphyry Mineralization at Surface



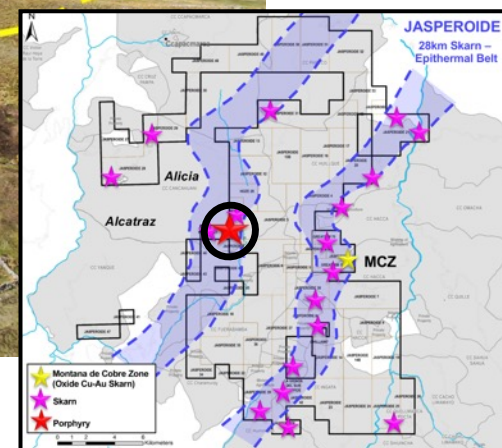
Epithermal quartz breccia assayed 2.60% Cu, 6.0g/t Au



Skarn with bornite assayed 2.61% Cu, 0.11g/t Au



Phyllic altered diorite porphyry assayed 1.41% Cu and 0.98g/t Au



C3 METALS IN PERU: SUMMARY

- Secured over 30,000 hectares in a strategic, world-class copper jurisdiction
- Maiden Resource reported May 23, 2023 on 1st of numerous targets
- Identified two parallel copper-gold, skarn-porphyry belts within C3 concession package: Jasperoide & Khaleesi Belts
- Identified 13 targets along the Jasperoide belt
- Outcropping porphyry, skarn and epithermal mineralization on Khaleesi Belt
- Have only systematically drill tested first target along the two belts
- Preliminary metallurgical test work underway on MCZ material
- Expanding existing drill permit area by 74% and continue to focus on drill permits for other targets

C3 METALS: Land Packages Put Together. Time to DRILL!

Current market cap of ~C\$50M



Drilling into confirmed porphyries in Jamaica has commenced



Jamaica: At least 16 porphyry and 40 epithermal targets over 30km strike extent



Maiden resource in Peru underpins value and protects downside



Peru offers exposure to large, strategic concession package in world-class, copper-gold district



CONTACTS

DAN SYMONS

President & CEO

Tel: (416) 716-6466

dsymons@c3metals.com

CORPORATE OFFICE

161 Bay St., 27th Floor
Toronto, Ontario M5J 2S1

Tel: +1 (647) 953 5924

Toll Free: +1 (888) 416 6560
info@c3metals.com



[/C3Metals](https://www.facebook.com/C3Metals)



[@C3Metals](https://twitter.com/C3Metals)



[@C3Metals](https://www.instagram.com/C3Metals)



[company/C3Metals](https://www.linkedin.com/company/C3Metals)

www.c3metals.com

Over 20,000 hectares in a Jurisdiction with...

THE RIGHT RECIPE FOR SUCCESS



- ✓ Stable, democratic government
 - Multi-party system
 - Elections every five years
- ✓ Mining is the second largest industry
- ✓ Over 150 open pit mines today
- ✓ 70+ year mining history
- ✓ Mining law in place and followed for over 75+ years
- ✓ English speaking
- ✓ Supportive local communities
- ✓ Multi-kilometre copper-gold trend with copper in:
 - soil
 - rock chip samples
 - limited pre-2022 drilling
 - drilling 2022 and 2023